

AMPSCOT



Ampscot is a Canadian-owned company that has been active in the oilfield for over 45 years. During that time, the company has built a solid reputation in the sale and service of oilfield production equipment. A long involvement in the repair and service fields has given the Ampscot staff invaluable practical experience with the problems encountered in oilfield production equipment. This knowledge has allowed them to create truly effective solutions to these problems.

Ampscot has now built a similar reputation for the manufacturing of its own equipment. The company has a modern 70,000 square foot machine shop and fabrication facility located in the Nisku Industrial Park. Ampscot manufactures A.P.I. Pumping Units in a variety of sizes from D114 through D1280. This equipment is rugged and serviceable, designed to perform reliably under the most adverse conditions

Ampscot has been constantly expanding and updating its machinery and plant to meet the technological challenges of the 1990's. The most modern production machinery allows Ampscot to achieve a high rate of productivity while maintaining a superior standard of quality. Our customers can be confident knowing that each one of our products is designed to exceed the latest A.P.I. Specifications 11E and is backed by the added protection of the A.P.I. Specifications Q1 Quality Assurance Program.

OPTIONS

Ampscot pumping units are available with a standard T-frame base or a wide frame which is skid-mounted for easy relocation. The sampson posts are a three-legged design; the third leg is removable to facilitate shipping. Walking beams are rated in accordance with the latest A.P.I. Specifications and are constructed from a minimum of A36 wide flange steel.

Ampscot pumping units come with a complete list of standard equipment. A wide selection of optional items is also available.

Standard Equipment:

- High Mount Package
- Central Lubrication System
- Safety Ladder with Ring
- Brake Assembly
- Wrenches: *Wrist Pin and Weight*
- Bridle Assembly
- Adjustable Motor Rails
- Reducer Sheave
- T-Frame
- Beltguard

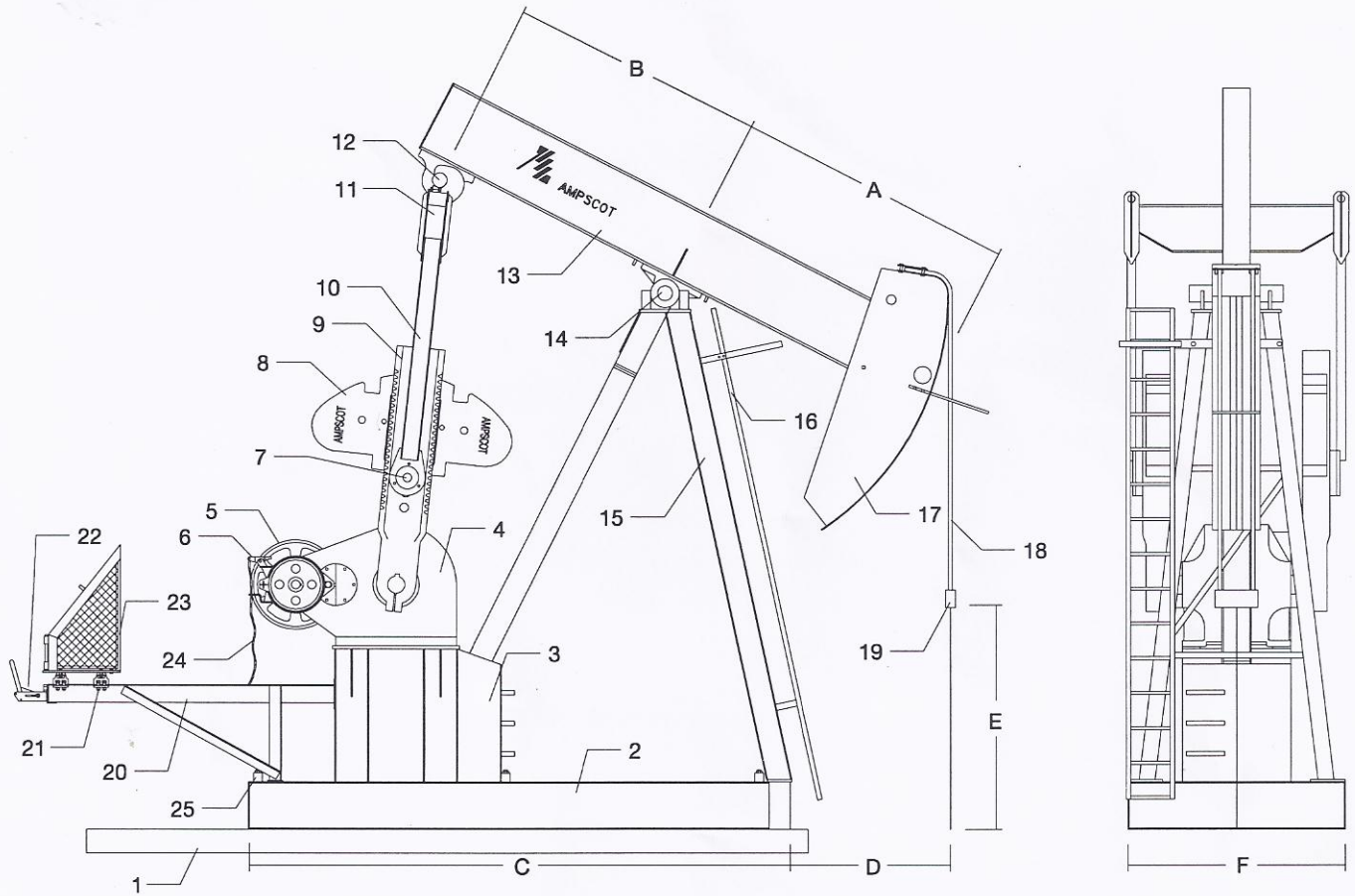
Optional Items:

- Low Mount Extension Package
- Tiedowns: *Single or Dual*
- Mesh Crankguards
- Gear Oil
- Counterbalance
- Concrete Base
- Wide Frame
- Prime Mover
- Belts and Sheave for Prime Mover
- Caged Ladder
- Wireline Stabilizers: *Dual Completion*
- Dual Completion Mulehead
- Jackshaft Assembly
- Polish Rod Equalizer

**1607 - 8th Street
Nisku, Alberta T9E 7S7
CANADA**

**Phone: (403) 955-2646
Toll Free: (800) 267-7268
FAX: (403) 955-2632**

S P E C I F I



ITEM	DESCRIPTION	ITEM	DESCRIPTION
1	Concrete Base	14	Saddle Bearing Assembly
2	Frame	15	Sampson Post
3	Reducer Sub-Base	16	Sampson Post Ladder
4	Gear Reducer	17	Mulehead
5	Reducer Sheave	18	Wireline
6	Brake	19	Polish Rod Hanger
7	Wrist Pin Assembly	20	Motor Extension
8	Weights	21	Slide Rails
9	Crank	22	Brake Lever
10	Pitman Arms	23	Beltguard
11	Equalizer Beam	24	Brake Cable
12	Tail Bearing Assembly	25	Tiedowns
13	Walking Beam		

CATIONS

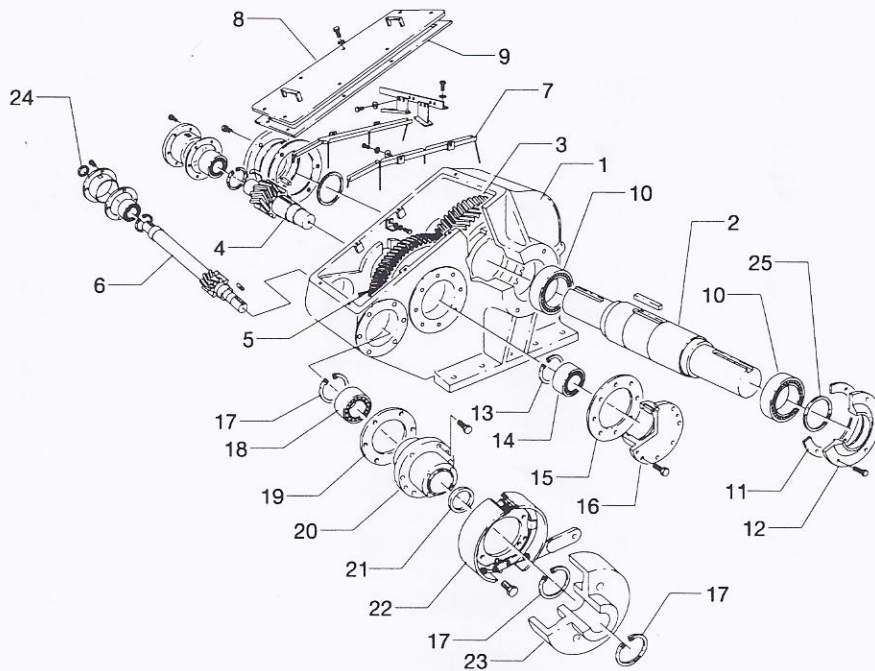
DIMENSIONS (Inches)

Size (Group)	A	B	C	D	E	F
114-133-054 (1A)	71.00	72.25	132.75	41.00	61.50	62.00
114-143-064 (1A)	84.00	72.25	132.75	54.00	59.25	62.00
114-173-064 (1A)	84.00	72.25	132.75	54.00	59.25	62.00
114-119-086 (2A)	95.00	83.00	180.00	53.50	68.50	72.00
160-173-064 (1A)	84.00	72.25	132.75	54.00	59.25	62.00
160-173-074 (2A)	84.00	85.00	180.00	42.50	68.50	72.00
160-200-074 (2A)	84.00	85.00	180.00	42.50	68.50	72.00
160-173-086 (2A)	95.00	83.00	180.00	53.50	68.50	72.00
160-173-100 (2A)	110.25	83.00	180.00	68.75	58.00	72.00
228-200-074 (2)	84.00	84.00	180.00	42.50	68.50	72.00
228-213-086 (2)	95.00	84.00	180.00	53.50	74.50	72.00
228-246-086 (2)	95.00	84.00	180.00	53.50	74.50	72.00
228-173-100 (2)	112.00	84.00	180.00	70.50	59.50	72.00
228-213-100 (*2)	112.00	84.00	180.00	70.50	59.50	72.00
228-213-120 (3)	136.00	118.00	247.25	82.75	89.75	72.75
320-213-086 (2)	95.00	84.00	180.00	53.50	74.50	72.00
320-246-086 (*2)	95.00	84.00	180.00	53.50	74.50	72.00
320-213-100 (2)	112.00	84.00	180.00	70.50	59.50	72.00
320-256-100 (3)	118.00	118.00	247.25	64.75	91.50	72.75
320-305-100 (3)	118.00	118.00	247.25	64.75	91.50	72.75
320-213-120 (3)	136.00	118.00	247.25	82.75	90.50	72.75
320-256-120 (3)	136.00	118.00	247.25	82.75	90.50	72.75
320-305-120 (*3)	136.00	118.00	247.25	82.75	90.50	72.75
320-213-144 (*3)	163.00	118.00	247.25	109.75	75.50	72.75
320-256-144 (3)	163.00	118.00	247.25	109.75	75.50	72.75
456-256-120 (3)	136.00	118.00	247.25	82.75	90.50	72.75
456-305-120 (3)	136.00	118.00	247.25	82.75	90.50	72.75
456-365-120 (3)	136.00	118.00	247.25	82.75	90.50	72.75
456-256-144 (3)	163.00	118.00	247.25	109.75	75.50	72.75
456-305-144 (4)	155.00	124.00	249.50	93.75	91.50	76.75
456-305-168 (4)	180.00	124.00	249.50	118.75	69.50	76.75
640-305-120 (3)	136.00	118.00	247.25	82.75	90.50	72.75
640-256-144 (3)	163.00	118.00	247.25	109.75	75.50	72.75
640-305-144 (4)	155.00	124.00	249.50	93.75	91.50	76.75
640-365-144 (4)	155.00	124.00	249.50	93.75	91.50	76.75
640-305-168 (4)	180.00	124.00	249.50	118.75	69.50	76.75
640-365-168 (5)	178.00	122.00	249.50	116.75	81.50	76.75
912-365-144 (*4)	155.00	124.00	249.50	93.75	91.50	76.75
912-305-168 (4)	180.00	124.00	249.50	118.75	69.50	76.75
912-365-168 (5)	178.00	122.00	249.50	116.75	81.50	76.75
912-427-168 (5)	178.00	122.00	249.50	116.75	81.50	76.75
912-305-192 (5)	203.00	122.00	249.50	141.75	78.13	76.75
912-365-192 (*5)	203.00	122.00	249.50	141.75	78.13	76.75
1280-365-168 (*5)	178.00	122.00	249.50	116.75	81.50	76.75
1280-427-168 (5)	178.00	122.00	249.50	116.75	81.50	76.75
1280-305-192 (*5)	203.00	122.00	249.50	141.75	78.13	76.75
1280-365-192 (*5)	203.00	122.00	249.50	141.75	78.13	76.75
1280-305-240 (*5)	230.00	122.00	249.50	168.75	41.00	76.75

*Denotes a non-API size

GEAR REDUCER

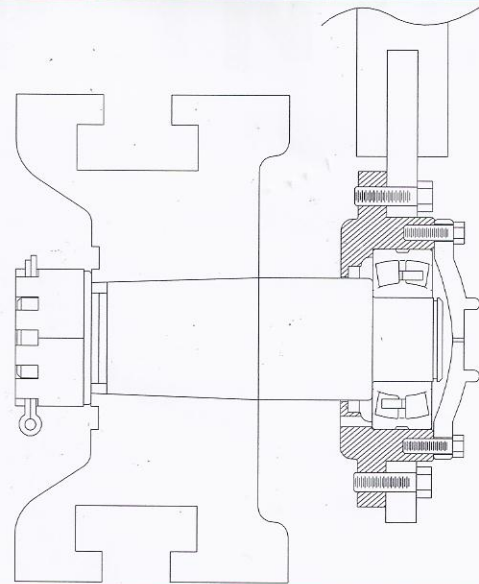
Ampscot manufactures gear reducers under license by the American Petroleum Institute. All of our products conform to the latest A.P.I. specifications. Every effort is made to manufacture a quality product with the strength and reliability that are so necessary in the oilfield. Ampscot gear reducers are designed specifically to handle the high cyclical loads encountered in oilfield pumping situations. The gearcase is a tub-type molded in one piece from high strength cast iron. The one-piece design gives the Ampscot reducer more strength than the common split reducers. High speed and intermediate speed roller bearings are enclosed in separate housings. This provides easy access to the bearings for service or replacement, and more importantly, protects the main gearcase in the event of a bearing failure. Lubricating oil is distributed directly to each bearing by a wiper and gravity feed system. This system provides adequate lubrication on reducers operating at pumping speeds as low as two strokes per minute, assuming that the proper viscosity oil is utilized. All gears are made of cast ductile iron and are of the herringbone type; the strongest gear technology available. The gearing is also designed with a coarse diametric pitch for added protection against shock loads. Pinion shafts are manufactured from top quality 4145 heat treated stress relieved steel to achieve high-tensile strength and maximum durability.



ITEM	DESCRIPTION	ITEM	DESCRIPTION
1	Gearbox	14	Intermediate Speed Bearing
2	Low Speed Shaft	15	Intermediate Speed Gasket
3	Low Speed Gear	16	Intermediate Speed Housing
4	Low Speed Pinion	17	High Speed Snap Ring
5	High Speed Gear	18	High Speed Bearing
6	High Speed Pinion	19	High Speed Gasket
7	Oiler Assembly	20	High Speed Housing
8	Cover	21	High Speed Seal
9	Cover Gasket	22	Brake Assembly
10	Low Speed Bearing	23	Brake Drum
11	Low Speed Gasket	24	V-Ring
12	Low Speed Housing	25	Brake Snap Ring
13	Intermediate Speed Snap Ring		

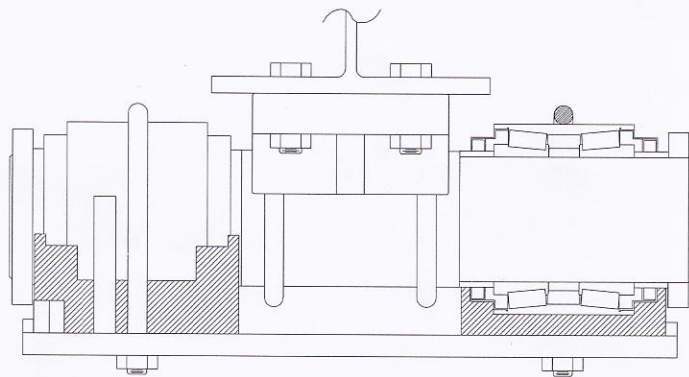
WRIST PIN, SADDLE BEARING & TAIL BEARING ASSEMBLIES

Wrist pins are of a generous size and use the well-proven single taper attachment to the crank. The assembly utilizes conventional self-aligning spherical roller bearings which are easily accessible through an inspection plate.



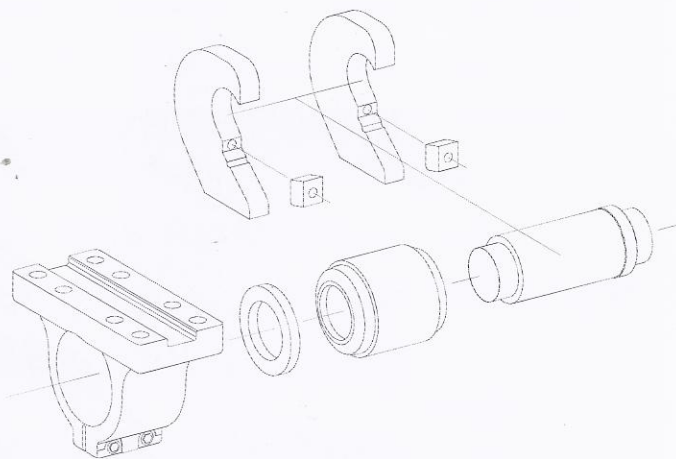
WRIST PIN ASSEMBLY

Ampscot D114 to D160 pumping units utilize a double tapered roller bearing which has a large sealed lubricant cavity and is mounted in a split housing. On units larger than D160, two of these bearings are used, one on each side of the walking beam. These bearings have excellent load carrying capabilities, are readily available and can be replaced with no special tools.



SADDLE BEARING ASSEMBLY

Ampscot D114 and D160 pumping units incorporate conventional self-aligning spherical roller bearings mounted in an interchangeable housing with the wrist pin assembly. This design greatly simplifies maintenance procedures by providing easy access to the assembly for parts replacement or servicing. This design also utilizes a minimum number of parts. For our larger units—D228 & up—we incorporate the double tapered roller assembly as illustrated. This unit can be dismantled and repaired without removing the walking beam. This is made possible by incorporating two prestressed hooks as shown. When the two wedge bolts are removed the pitman assembly can be lifted off allowing the bearing to be serviced, or the unit to be easily moved. The bearing and pin are a complete unit and are removed by loosening the housing clamps.



TAIL BEARING ASSEMBLY