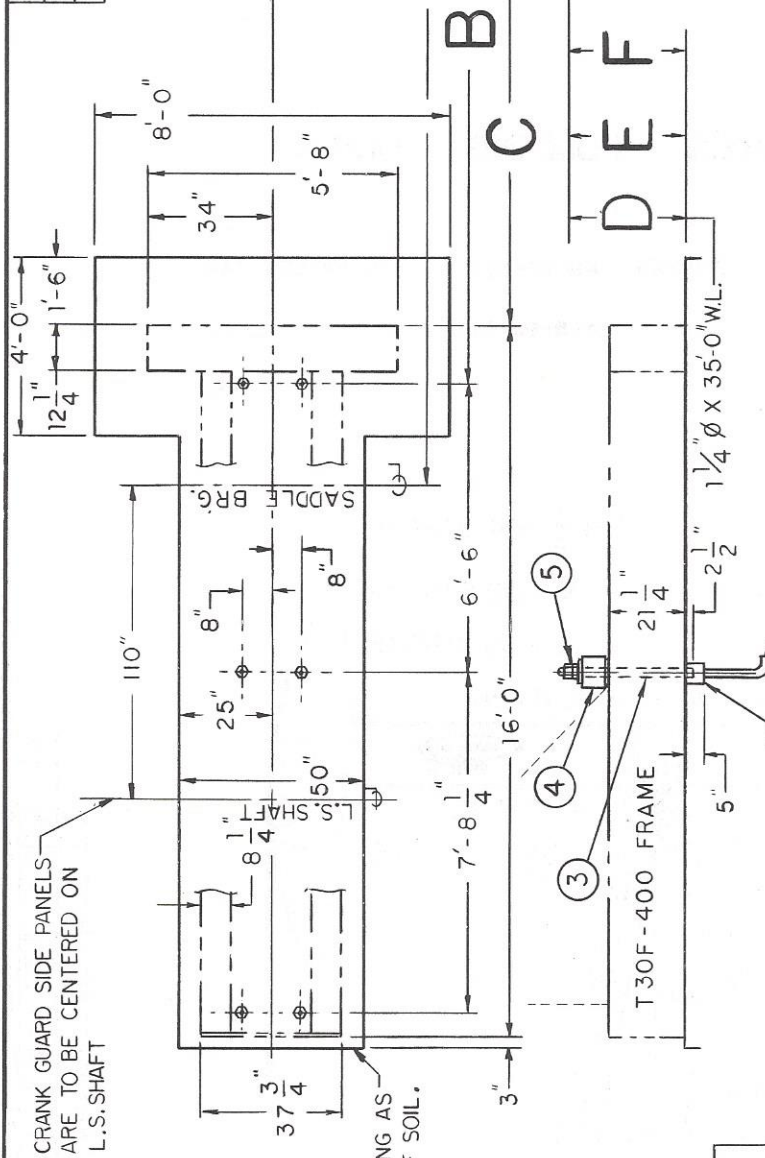


228	1/8	T 30F - 405 (62" - 71")	RDCR SHVE	PM SHVE	TOTAL SPM RATIO @ 1160 BELT	V - C195		
30-4C	7.0	128.7	9.0	C195	14.0	64.4	18.0	C195
36-3C	7.0	154.4	7.5	C210	16.0	67.6	17.2	C210
320	1/8	T 30F - 405 (62" - 71")	RDCR SHVE	PM SHVE	TOTAL SPM RATIO @ 1160 BELT	V - C210		
36-4C	7.0	155.9	7.4	C210	16.0	68.2	17.0	C210
44-4C	7.0	190.6	6.1	C225	18.0	74.1	15.7	C225
456	1/8	T 30F - 406 (62" - 72")	RDCR SHVE	PM SHVE	TOTAL SPM RATIO @ 1160 BELT	V - C225		
44-5C	7.0	187.2	6.2	C225	18.0	72.8	15.9	C225
50-5C	8.0	186.1	5.5	C240	20.0	74.5	15.6	C240

PLEASE USE UNIT FOR DIMENSIONS.

UNIT	A	B	C	D	E	F
456 { 256 } 320 { 213 } 228 { 173 }	158 3/8	144	130 3/4	115	66"	
456 { 305 } 320 { 256 } 228 { 213 }	132	120	104 3/8	88 5/8	63"	
456 { 305 } 320 { 256 } 228 { 213 }	110	100	82 3/8	66 5/8	62 1/2"	

CRANKS	
KB-99-43	
KLB-99-43	



FDN. BOLT ASS'Y.				
5	12	1 1/2" HEX NUT	AZ14-HF	003520
4	3	1/2" CLAMP ~ 38 3/4" LG	T36F-49	066442
3	6	1 1/2" x 34" LG. STUD	Y13-8-20	
2	6	1 1/2" x 5" LG. SLEEVE NUT	T36F-59	066430
1	6	1 1/2" x 30" LG. FDN. BOLT	Y3-8-11	039722
MK	QTY	DESCRIPTION	PART NO.	'C' NO.

SUPERSEDED BY		DATE
SUPERSEDES		DATE
SCALE	DRN.	DATE
3/8" = 1'-0"	R7	4-5-87
MATL.	CHKD BY	DATE
NOTED	B	6/87
SHEET		OF
COMMODITY NO.		
REVISIONS		
NO.	DESCRIPTION	
INTERNATIONAL MANUFACTURING CORPORATION		
FOUNDATION FOR AMSET		
HIGH PRIME - E.M.		
DWG. NO.	REV.	SIZE
T30F-B1		B

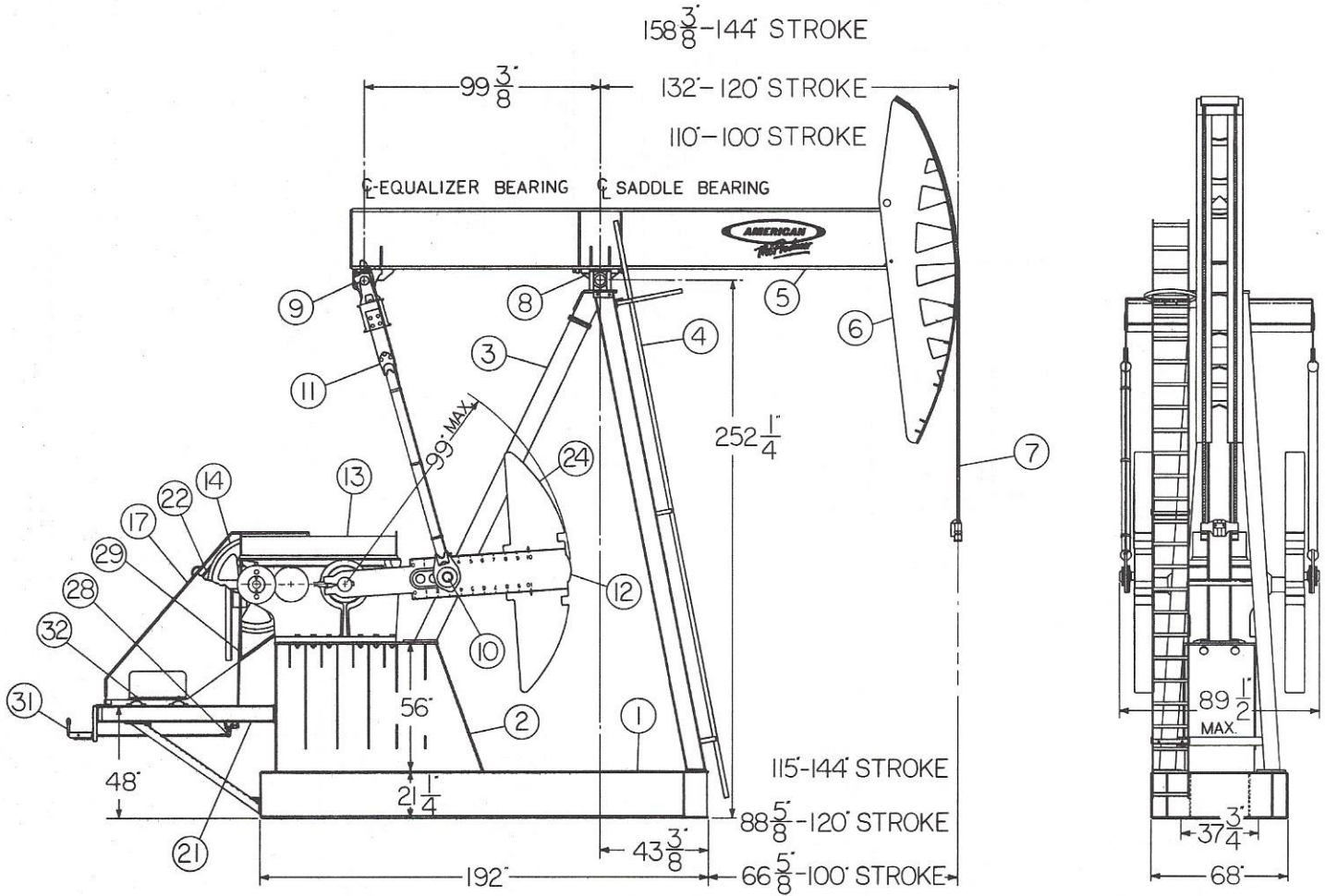
INSTALL AND MAINTAIN PUMPING UNIT IN ACCORDANCE WITH API RP 11G. DO NOT USE WOOD OR COMPOSITION MATERIALS BETWEEN UNIT FRAME AND CONCRETE FOUNDATION.



INTERNATIONAL MANUFACTURING CORPORATION

"4TC" SERIES PUMPING UNITS

REDUCERS :	D456G	CRANKS :	KB-99-43	STROKES :	144"
	D320G		KLB-99-43		120"
	D228G				100"



AIMCO

OIL FIELD EQUIPMENT SINCE 1924

P.O. BOX 7037 • FORT WORTH, TEXAS 76111 • TELEPHONE 817/838-2301 • TELEX — 794817

• DALLAS, TEXAS • MIDLAND, TEXAS • ODESSA, TEXAS • SHREVEPORT, LOUISIANA • BAKERSFIELD, CALIFORNIA • HOUSTON, TEXAS
 • OKLAHOMA CITY, OKLAHOMA • TULSA, OKLAHOMA • DENVER, COLORADO • CASPER, WYOMING