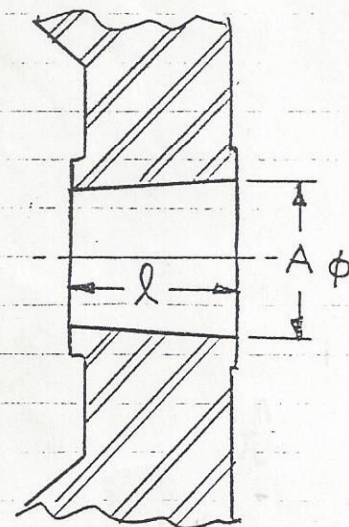
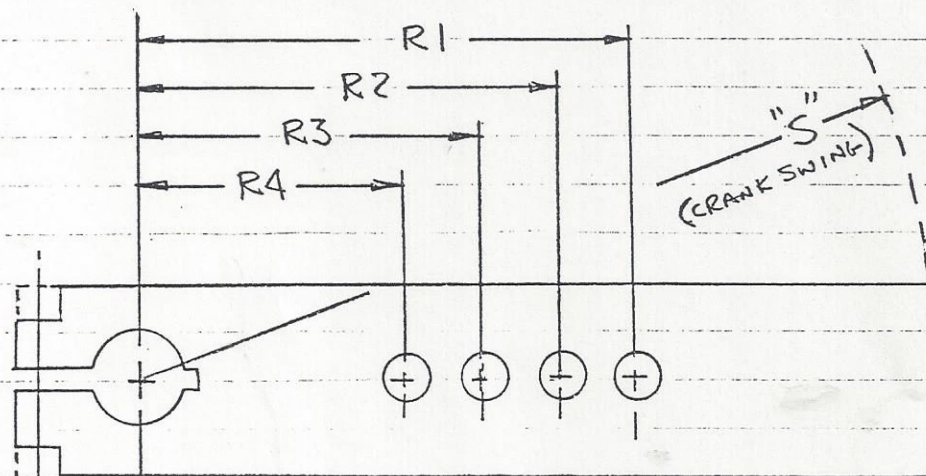


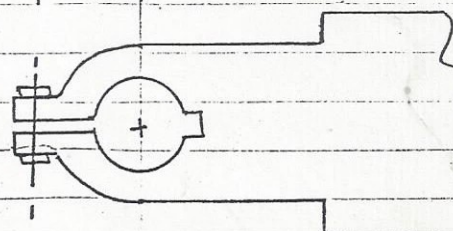
INTERNATIONAL MANUFACTURING CORPORATION

| CRANK NO. | "S" | R1 | R2 | R3 | R4 | A | l |
|-----------|----------|---------|---------|---------|---------|-------------|-------|
| TF-45 | 46 7/8 | 23.5 | 18.5 | 13.5 | — | 2 1/2 | 4 1/2 |
| TF-48 | 53 | 23.5 | 18.5 | 13.5 | — | 2 1/2, 3 | 4 1/2 |
| TF-54 | 58 | 26.5 | 21.5 | 16.5 | 11.5 | 2 1/2, 3 | 4 1/2 |
| TF-56 | 52 1/4 | 26.5 | 21.5 | 16.5 | — | 2 1/2 | 4 1/2 |
| TF-63 | 66 5/8 | 31.1875 | 26.1875 | 21.1875 | * | 3 | 4 1/2 |
| TF-64 | 65 1/2 | 31.375 | 26.375 | 21.375 | 16.375 | 2 1/2, 3, 4 | 4 1/2 |
| TF-73 | 66 5/8 | 36. | 31. | 26. | * | 3 1/2 | 4 1/2 |
| TF-74 | 76 1/4 | 36.3125 | 31.3125 | 26.3125 | 21.3125 | 3, 4 | 4 1/2 |
| TF-85 | 75 5/8 | 41.75 | 36.75 | 31.75 | * | 3 1/2, 4 | 4 1/2 |
| TF-86 | 85 5/8 | 42.1875 | 37.1875 | 32.1875 | * | 3 1/2, 4 | 4 1/2 |
| TF-99 | 86 3/8 | 48.6875 | 43.6875 | 38.6875 | * | 4 | 4 1/2 |
| TF-99H | 86 3/8 | 48.6875 | 43.6875 | 38.6875 | — | 4 | 7 1/4 |
| TF-99J | 87 | 48.6875 | 43.6875 | 38.6875 | — | 4 | 7 1/4 |
| TF-119 | 99 | 58.25 | 48.25 | 38.25 | * | 4 | 4 1/2 |
| TF-119H | 99 | 58.25 | 48.25 | 38.25 | — | 4 | 7 1/4 |
| TF-119J | 98 5/16 | 58.25 | 48.25 | 38.25 | — | 4 | 7 1/4 |
| TF-143 | 117 | 70. | 60. | 50. | * | 4 | 4 5/8 |
| TF-143H | 117 | 70. | 60. | 50. | — | 4 | 7 1/4 |
| TF-143J | 117 3/16 | 70. | 60. | 50. | — | 4 | 7 1/4 |

* EARLY PRODUCTION HAD 4-HOLES



19 SEP 88 PLS

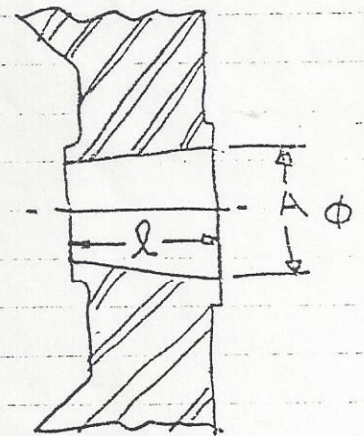
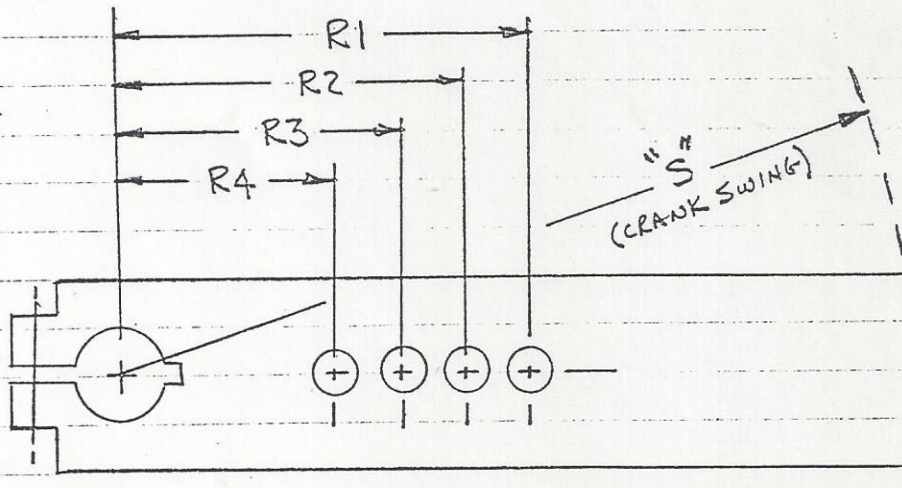


SHAPE OF: TF-99J
TF-119J
TF-143J

INTERNATIONAL MANUFACTURING CORPORATION

| CRANK NO. | "S" | R1 | R2 | R3 | R4 | A | l |
|-----------|--------------------------------|--------|--------|--------|--------|--|-------------------------------|
| C036 | 41 ³ / ₈ | 17.625 | 12.625 | — | — | 2 ¹ / ₂ | 4 ¹ / ₂ |
| C037 | 41 ³ / ₈ | 17.625 | 12.625 | — | — | 2 ¹ / ₂ | 4 ¹ / ₂ |
| C042 | 46 ⁷ / ₈ | 20.5 | 15.5 | 10.5 | — | 2 ¹ / ₂ | 4 ¹ / ₂ |
| C48 | 52 ¹ / ₄ | 23.5 | 18.5 | 13.5 | — | 2 ¹ / ₂ , 3 | 4 ¹ / ₂ |
| C49 | 52 ¹ / ₄ | 23.5 | 18.5 | 13.5 | — | 2 ¹ / ₂ | 4 ¹ / ₂ |
| C54 | 57 ⁵ / ₈ | 26.5 | 21.5 | 16.5 | — | 2 ¹ / ₂ , 3 | 4 ¹ / ₂ |
| C64 | 66 ⁵ / ₈ | 31.375 | 26.375 | 21.375 | * | 2 ¹ / ₂ , 3, 3 ¹ / ₂ , 4 | 4 ¹ / ₂ |
| C65 | 66 ⁵ / ₈ | 31.375 | 26.375 | 21.375 | — | 2 ¹ / ₂ , 3 | 4 ¹ / ₂ |
| C74 | 75 ⁵ / ₈ | 36.312 | 31.312 | 26.312 | * | 2 ¹ / ₂ , 3, 3 ¹ / ₂ , 4 | 4 ¹ / ₂ |
| C75 | 66 ⁵ / ₈ | 36.375 | 31.375 | 26.375 | — | 2 ¹ / ₂ , 3 | 4 ¹ / ₂ |
| C100 | 99 | 48.875 | 43.875 | 38.875 | 33.875 | 4 | 4 ¹ / ₂ |
| C120 | 117 | 58.875 | 48.875 | 38.875 | 28.875 | 4 | 4 ¹ / ₂ |

* EARLY PRODUCTION HAD 4-HOLES



INTERNATIONAL MANUFACTURING CORPORATION

| CRANK NO. | "S" | R1 | R2 | R3 | R4 | R5 | A | ℓ | PTI NO. |
|--------------|-----|--------|--------|--------|------------|-------|----|----|---------|
| KL-64-27 | 64 | 27. | 22. | 17. | - | - | 3½ | 4½ | - |
| KL-76-36 | 64 | 36. | 31. | 26. | - | - | 3½ | 4½ | - |
| K-76-36 | 76 | 36. | 31. | 26. | - | - | 3½ | 4½ | - |
| K-76-320 | 76 | 36. | 31. | 26. | - | - | 3½ | 4½ | - |
| KB-76-36 * | 76 | 36. | 31. | 26. | - | - | 3½ | 4½ | TF-2580 |
| | | | | | | | | | |
| K-99-43 | 99 | 43. | 38. | 33. | - | - | 4 | 7¼ | - |
| KL-99-43 | 99 | 43. | 38. | 33. | - | - | 4 | 7¼ | - |
| KB-99-43 | 99 | 43. | 37.5 | 32. | - | - | 4 | 7¼ | TF-2578 |
| KLB-99-43 | 99 | 43. | 37.5 | 32. | - | - | 4 | 7¼ | TF-2578 |
| | | | | | | | | | |
| K-117-53 | 117 | 53. | 43. | 33. | - | - | 4 | 7¼ | - |
| KA-117-53 | 117 | 53. | 46. | 39. | - | - | 4 | 7¼ | - |
| KB-117-53 | 117 | 53. | 46. | 39. | - | - | 4 | 7¼ | TF-2578 |
| KLB-117-53 | 117 | 53. | 46. | 39. | - | - | 4 | 7¼ | TF-2578 |
| KB-117-53-4 | 117 | 53. | 46. | 39. | 32. | - | 4 | 7¼ | TF-2578 |
| KLB-117-53-4 | 117 | 53. | 46. | 39. | 32. | - | 4 | 7¼ | TF-2578 |
| | | | | | | | | | |
| M-76-902 | 76 | 35.490 | 28.797 | 22.104 | 15.411 | - | 3½ | 4½ | - |
| M-117-50 | 117 | 50. | 43.5 | 37. | 30.5 | 24. | 4 | 7¼ | - |
| M-117-1352 | 117 | 53.25 | 46.75 | 40.25 | 33.75 | 27.25 | 4 | 7¼ | - |
| | | | | | R6 = 20.75 | | | | |

* SPL. FOR VEN. - NOT PRODUCED IN U.S.A.

28 DEC 68
16-SEP-68

