

TABLE OF CONTENTS

SPECIFICATION	1	LUBRICATION	18
SAFETY PRECAUTIONS	2	OPERATION	20
GENERAL INFORMATION	3	MAINTENANCE	21
ASSEMBLY	5	INDEX	29

SPECIFICATIONS

Unit Designation Number - G228-246-86
 *G228-213-100

Dimensions:

A - 18'	H - 16' 3-3/8"	S - 10'
B - 8' 10-7/8"	J - 27' 9-3/4"	T - 16-1/4"
*8' 2"	K - 14"	U - 7' 4"
C - 3' 7"	L - 14"	V - 6' 2-3/8"
*4' 2"	M - 27"	W - 7' 2-1/2"
D - 3' 9"	N - 7' 2"	X - 3' 1"
E - 9' 3"	P - 2' 6"	Y - 7' 9-1/2"
*10' 9"	Q - 11' 3-1/8"	Z - 6' 11-3/4"
F - 9' 5"	R - 7' 1/2"	UU - 5' 2-1/2"
G - 3' 1-3/8"		YY - 6' 1"

**SPECIFICATIONS:
 REDUCER DATA**

Peak Torque, inch-pounds	228,000
Reduction Ratio	28:45:1
Std. Sheave P.D. Grooves	36" 4C
Maximum Sheave P.D.	41"

STRUCTURE DATA

Weight, Approx. Shipping	31,080
Beam Capacity, lb.	24,600 *21,300
Structural Unbalance, lb.	+760 * +280
Stroke Lengths, in.. 50, 62, 74, 86	*57, 72, 86, 100

Working Centers:

Well End	9' 3" (E)	*10' 9" (E)
Pitman End	9' 5" (F)	

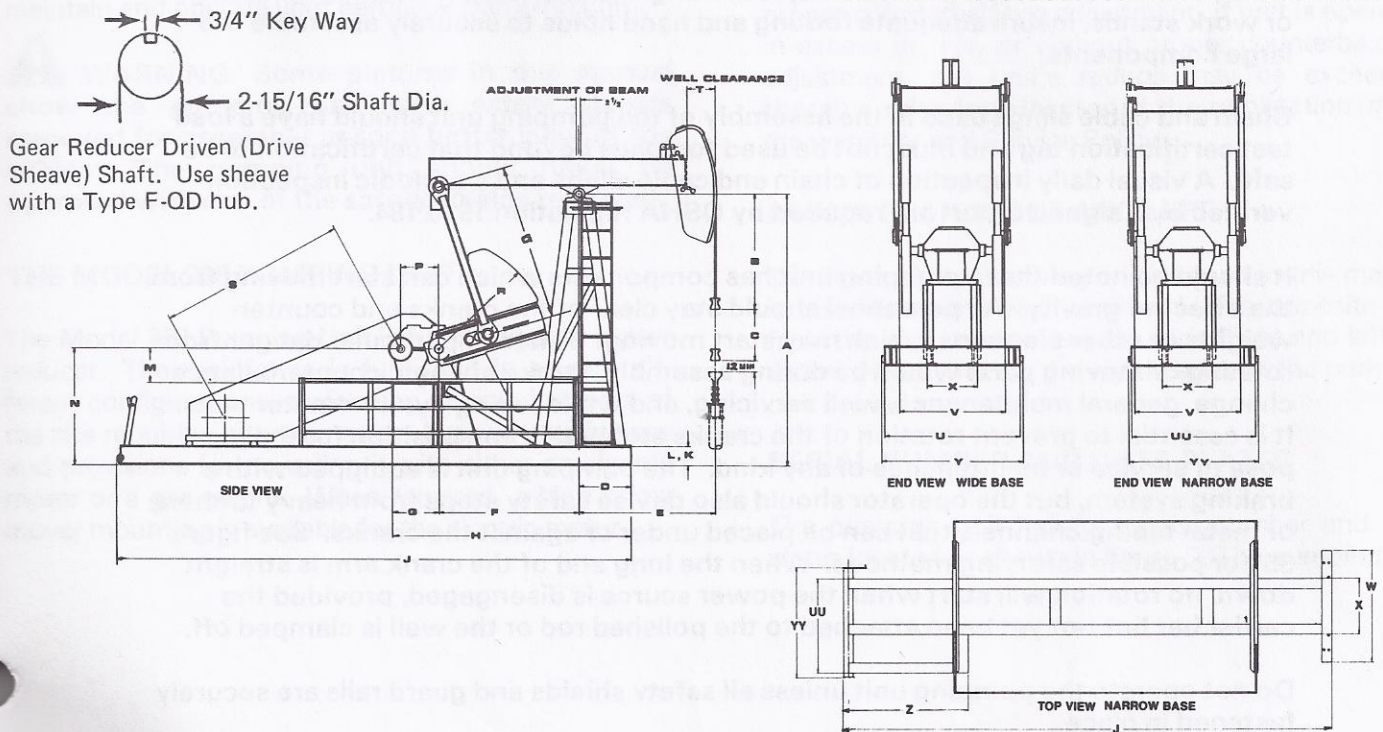


Figure 1.