

HESSTON[®]

SENTRY PUMPING UNITS



Chain Reducers
Models 80/114/160

The Hesston Sentry Line

A proven design...refined!



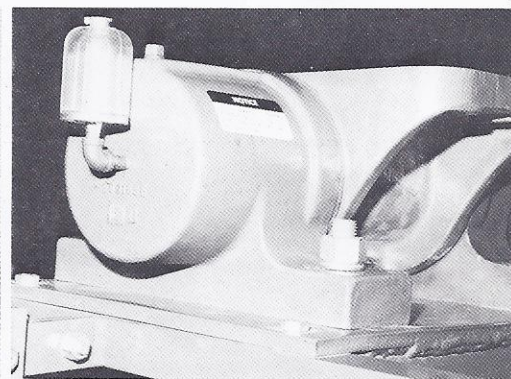
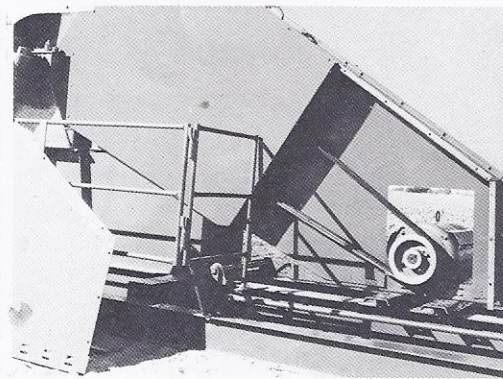
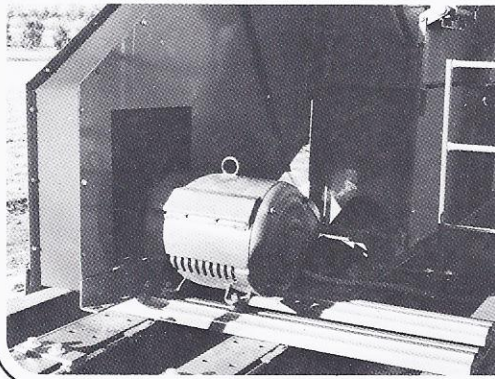
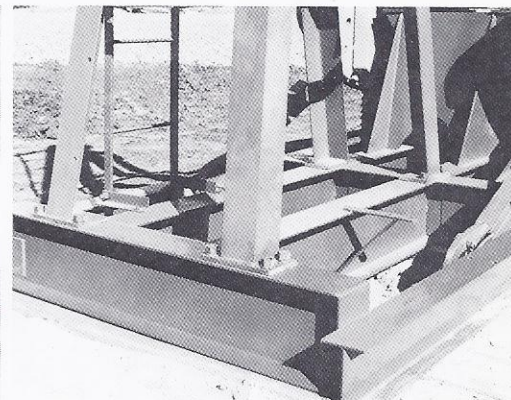
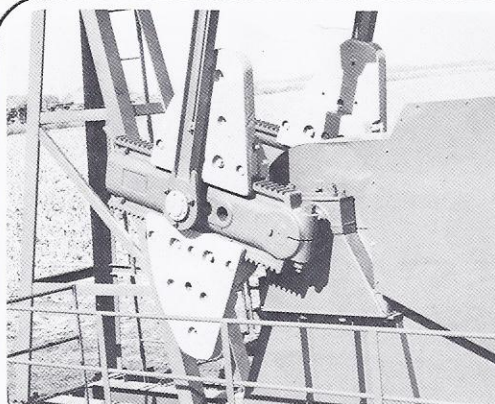
Hesston Sentry chain reducer pumping units feature double-reduction, triple chain drives using a proven design which has been refined to meet or exceed API specifications.

From base to walking beam, the Hesston Sentry is a quality oil pumping unit. As a major force in farm machinery manufacturing for 35 years, Hesston has a worldwide reputation for quality products. Plus, Hesston Sentry service personnel have over 50 years of pumping unit repair and maintenance experience. This service support, combined with Hesston's engineering and manufacturing expertise, brings you high-quality oil pumping units you can count on!

Counter Balance and Guard Rails The rack and pinion design of the cast iron crank counter balance allows one man to quickly and easily make any needed adjustment with wrench provided. Guard rails of welded tubular steel are easily removed for servicing.

Horsehead Bridle and Hanger A steel casting supporting the wireline is welded into a fabricated and welded steel plate assembly. Horsehead features include a hinge for clearance while servicing the well and an adjusting screw for vertical alignment. Hanger is a one piece wireline babbitted into a steel casting.

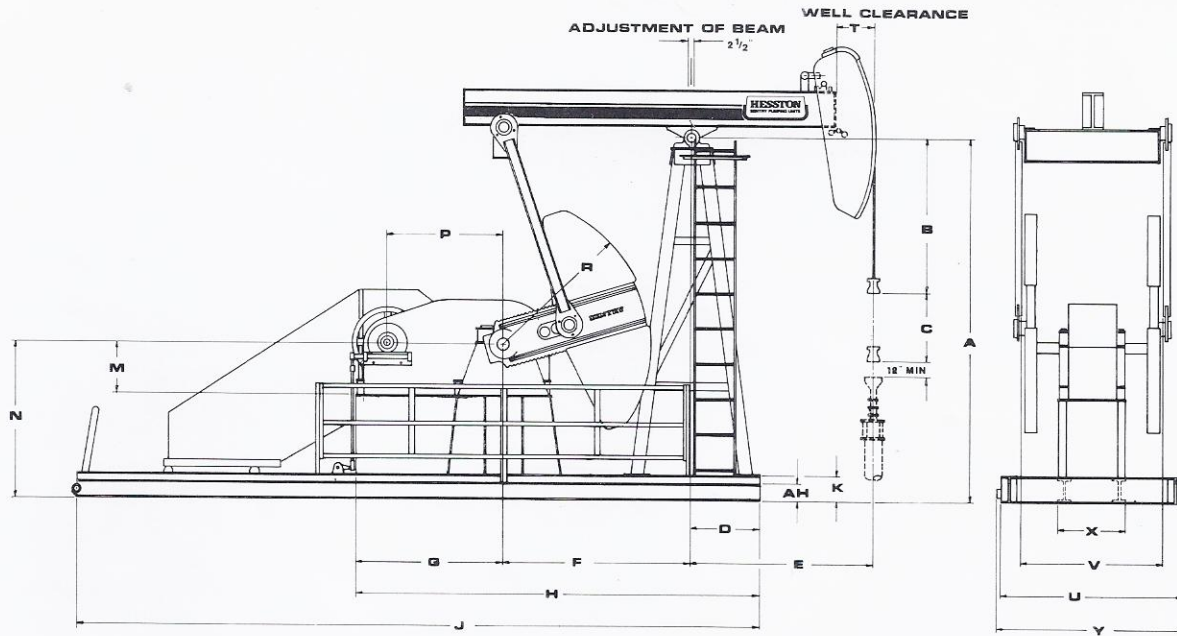
Wide Base and Samson Post Heavy structural beams of an all welded construction make up this wide base. The four legged samson post is a welded structure made up of heavy angle iron and crossed braced with heavy channel iron.



Prime Mover Cast iron "T" slot rails for mounting the prime mover clamp directly to the wide flange structure of the base, and adjusting screws are provided for belt tensioning.

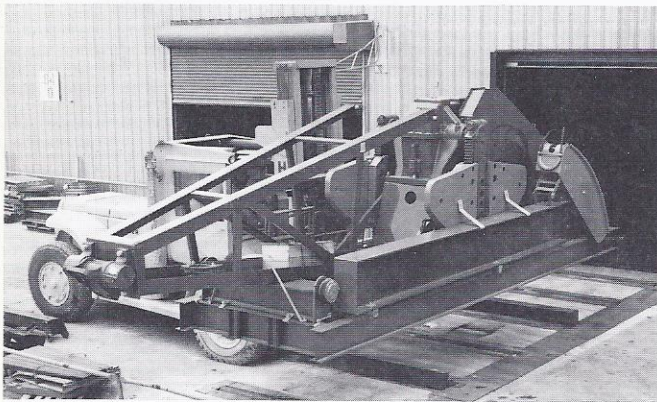
Belt Guard Belt guard is a fabricated sheet metal bolted assembly allowing for removal of any one panel, providing easy access to belts and sheaves, without the aid of hoisting equipment.

Saddle Bearing The rugged cast iron saddle bearing is completely machined and has a large lubricant reservoir. The lubrication gauge visible from the ground can be mounted on either side.

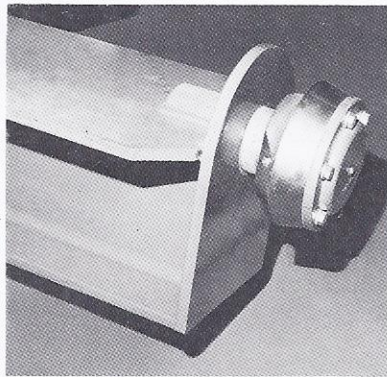
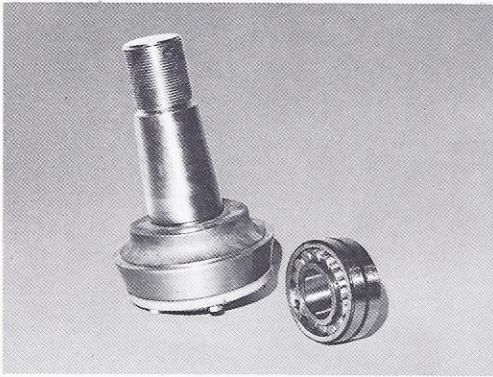
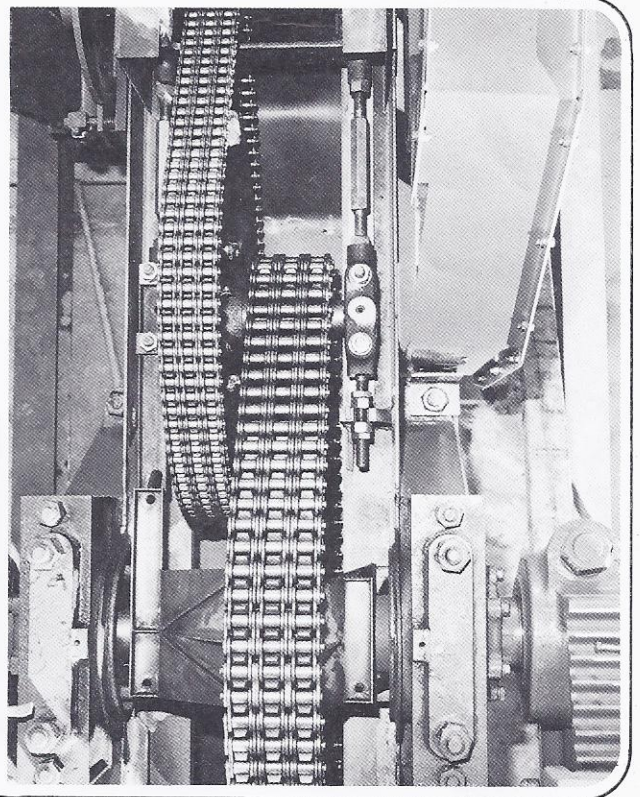


Dimensions Unit Number	DIMENSIONS																			
	A	B	C	D	E	F	G	H	J	K	M	N	P	R	T	U	V	X	AH	Y
CH80D-133-54	12' 0"	5' 0"	2' 3"	2'10-3/4"	6' 0"	6' 1-1/2"	5' 0-1/2"	14'0-1/2"	22'5-1/4"	12"	20-3/8"	5' 3"	4' 0-3/8"	5' 2-5/8"	1' 2-1/2"	6' 0"	5' 0-3/4"	2' 2-1/2"	8"	6' 4-1/2"
CH114D-173-64	14' 0"	6' 3"	2' 3"	2'10-3/4"	6' 9"	6'10-1/2"	5' 0-1/2"	14'9-3/4"	23'6-3/4"	12"	20-3/8"	5' 11"	4' 0-3/8"	5' 9-3/4"	1' 3"	6' 0"	5' 0-3/4"	2' 2-1/2"	8"	6' 4-1/2"
CH160D-200-74	16' 0"	7' 4"	3' 1"	2'11-1/4"	8' 0"	8' 2"	5' 8"	16' 9"	25'2-3/8"	1' 1-7/8"	2' 0-3/8"	6' 7"	4' 5-1/2"	6' 6-1/8"	1' 11"	6' 2"	5' 6-7/8"	2' 9-1/4"	8"	6' 7"

Specifications Unit Number	REDUCER DATA				STRUCTURE DATA					Working Centers		OPTIONS
	Peak Torque	Reduction Ratio	Std. Sheave P.D.-Grooves	Maximum Sheave P.D.	Beam Capacity, Lb.	Stroke Lengths, In.	Well End	Pitman End	Elevated base for mounting of electrical motor Auxiliary weight kits for all models			
CH80D-133-54	80,000	23.75:1	30" 3C	52"	13,300	24, 34, 44, 54	6' 0"	6' 1-1/2"	Check with authorized dealer for current pricing and specifications.			
CH114D-173-64	114,000	23.75:1	30" 4C	52"	17,300	34, 44, 54, 64	6' 9"	6' 10-1/2"				
CH160D-200-74	160,000	25.33:1	30" 4C	52"	20,000	44, 54, 64, 74	8' 0"	8' 2"				



Easy Assembly
Each Hesston SENTRY pumping unit is designed, built and packaged at the factory for fast, efficient assembly at the wellsite.



Wrist pins and Equalizer Bearings Wrist pins and pitman (equalizer) bearings are identical double spherical self-aligning roller bearings mounted in machined cast iron housings. Lubrication to these bearings can be accomplished from ground level.

Cross Yoke The cross yoke is a welded construction of wide flange beam strengthened with a heavy duty plate which bolts directly to the walking beam. Machined 1045 shafting on each end of the beam carries the pitman (equalizer) bearing loads.

Chain Reducer The double reduction chain reducer is housed in a heavy duty welded steel case. Triple heavy duty roller chain with extra heavy side plates transmit the power to the sprockets, carried on 4140 mill heat-treated shafting supported on tapered roller bearings throughout the unit. Shaft center can easily be adjusted. Oil is supplied to all components by chains operating in an oil reservoir and with a system of wipers and troughs distributing oil to bearings.

915-528-2965



Manufacturer of the Sentry pumping unit, employs over 3000 people world wide with over 1800 at the Hesston, Kansas facility (pictured below) with 24 acres under roof.



John Serger - 316 327-6632

C + Y Castings
405-255-4453
Duncan, OK.
Keith Smith

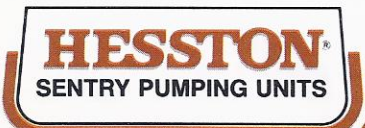
Petersow - Bought Inv.

Osborn - Hammering
T+T Pipe Steel - Duncan, OK.
506 So 6th St Sold
775533

405-255-4114

Pete Trent
Terry "

For more information, or for your nearest Hesston Sentry distributor:
CALL TOLL-FREE 1-800-835-2090
(In Kansas, 316-327-6480)



Hesston Corporation, Hesston, Kansas 67062