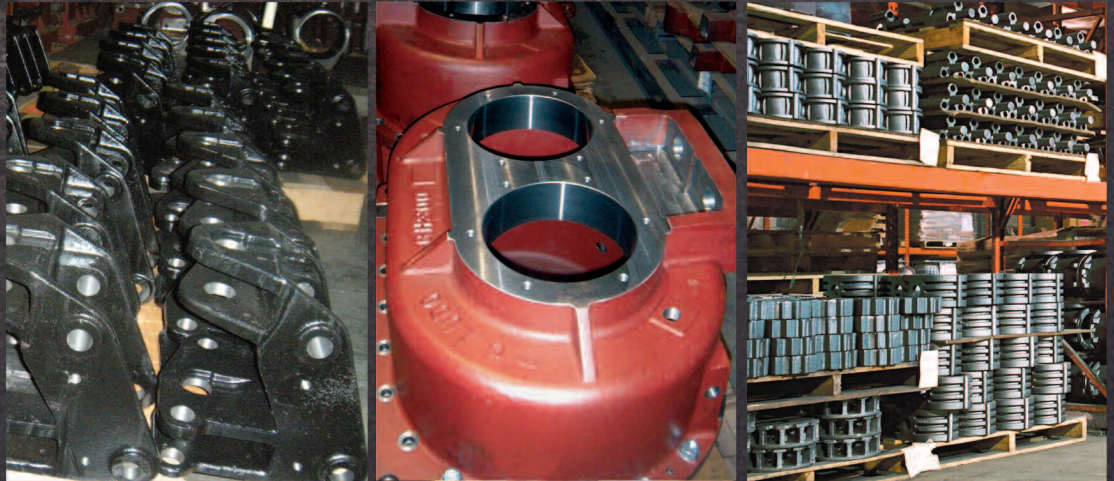




JENCAST

Casting Services



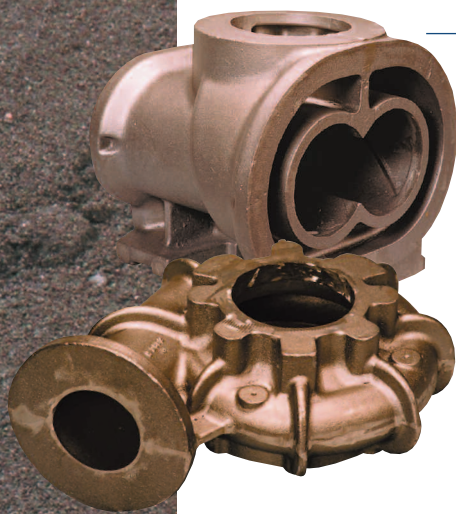
JENCAST
a division of Jensen International

A Manufacturing Partnership
of Working Americans
Serving American Industry

JENCAST Casting Services

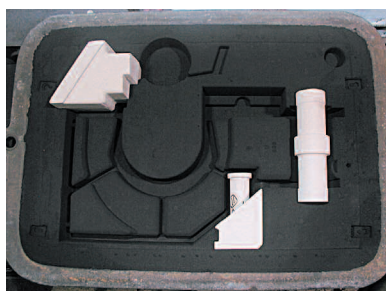
Get Fast Turnaround and Economy

At Jencast you'll get castings made to spec – on time – at competitive prices. We use state-of-the-art light tooling and batch melt trim to allow rapid production changes. Fast turnaround lets you inspect first castings and still meet tight schedules.



Molding Capacity

Jencast specializes in castings up to 2000 pounds (gray iron); up to 1250 pounds (Ductile, ADI, and CGI) in quantities from 1 to 5000. We use green-sand cope and drag molding with a low-energy process to gain the advantage of light tooling. One of our two molding lines is outfitted for 28" x 40" – 14/14 flasks with production up to 500 molds per day. Our other line is outfitted for 44" x 56" – 22/22 flasks with production up to 100 molds per day.



Melt Capacity

We pour all grades of ADI and Ductile (Nodular), CGI (Vermicular), and Gray Iron (Flake) up to 40 Grade. Our two 9-ton coreless induction three phase furnaces can melt 5 tons per hour or 120 tons per day. Batch melt trim ladles give us a high degree of flexibility in producing the grades you want. To produce Ductile and CG irons, we use the Odermath wire feed technique to increase reaction times and combine that with state-of-the-art metallurgical Melt Lab analysis. The result is high nodular count and high quality iron.

Core Production

We make cores weighing anywhere from ounces to hundreds of pounds and have production capacity matched to the demands of our molding lines. Our cold-box process uses low-level energy to permit light tooling. We produce up to 20 tons of cores daily from two different sands and varying chemical mixes. Cores are made with core blowers or by the mold simulation process.



JENCAST Support Services



Save Time and Expense

Jencast strives to achieve total customer satisfaction. We offer a wide range of support services to reduce non-essential handling and your inventory costs. You get one-stop hassle-free service and product delivered when you need it, ready to use. Our services add value and keep you from having to tie up cash unnecessarily, through inventory management.



Pattern Building

From our drawings or yours, we construct patterns in the material best suited to the requirements of production and to maintaining geometric tolerances. All patterns are proofed by carefully checking the accuracy of first-off castings. We verify critical dimensions and send you a sample casting for inspection by your engineering staff.



Casting Preparation

Jencast technicians carefully remove extraneous material by machine and by hand. Casting preparation ensures that the finished product becomes an exact duplicate of the tooling used in foundry production. Preparation may also require special checking fixtures so that our technicians can assure your castings are properly sized for machining and assembly.



Heat Treating

Jencast offers heat treating to meet additional specifications of your castings. These services include annealing, stress relieving, normalizing, quench and tempering, and austempering. Our furnaces are sized to handle a volumetric capacity of 48" x 36" x 72".

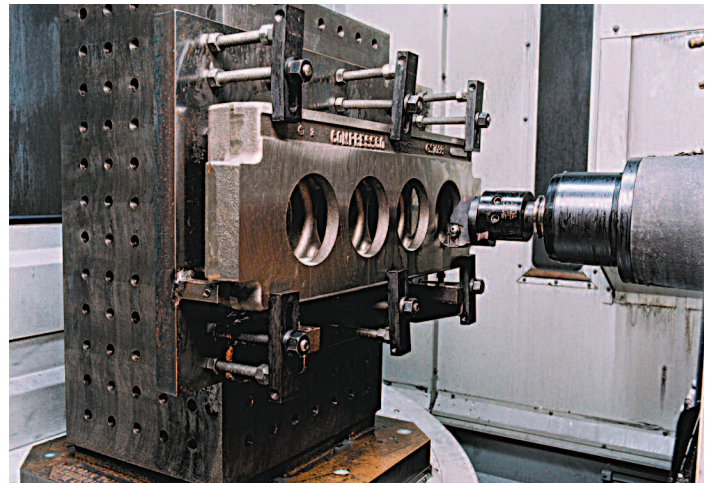
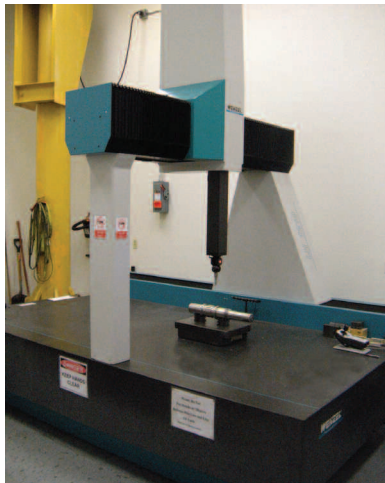
Surface Coatings

Coatings enhance casting appearance and are typically applied for corrosion or abrasion resistance or to smooth areas subject to fluid flow. We provide porcelain, phenolic, epoxy, and enamel coatings and galvanizing. All coatings are controlled to proper thicknesses.



Get Single-Source Responsibility

Not only can we machine castings to your specifications, the Jencast castings we machine will be delivered 100% scrap free. We guarantee it!



Zero-Defect Parts

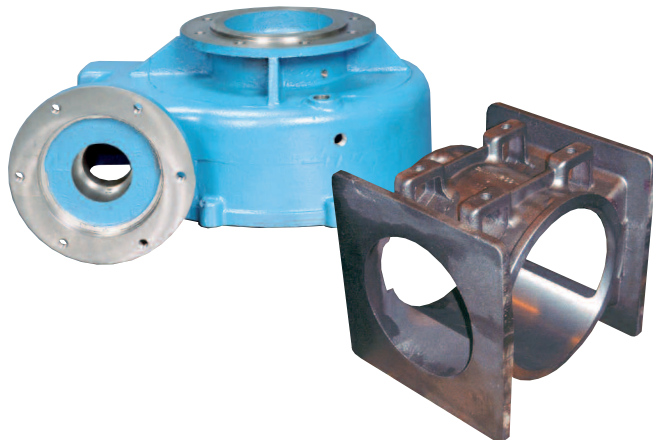
Whether the problem originates at the foundry or the machine shop, third-party machining almost always results in customers receiving flawed parts. Having us machine the castings we produce will all but eliminate defects. Your inventory will always contain 100% usable parts.

Machining Quality

All machining operations are documented, and the log travels with our castings through all production steps. When requested, 100% inspection is made of all critical dimensions as set forth by your quality assurance standards. We use a wide range of measuring equipment – all of it calibrated to industry or National Bureau of Standards criteria.

Machining Capacity

Our machine shop envelope complements our foundry operations. What we cast, we can machine. We have vertical and horizontal CNC 4-axis machining centers and vertical and horizontal CNC turning centers. Manual machines complete the mix. Operations include turning, boring, broaching, milling, grinding, drilling, threading, gear and spline hobbing, and shaping.

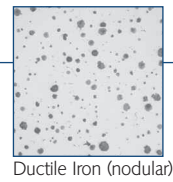


Machining Capability

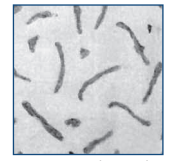
We can maintain geometric location to ± 0.001 inch. We hold dimensional tolerances to ± 0.0004 . All machines are carefully maintained so that we can meet demanding tolerances at high production rates. We periodically replace our CNC machines to increase shop efficiency and to give you a more competitively priced product with which to meet your competition.

Quality is Fundamental

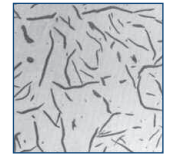
Careful monitoring of each stage in the casting process is your assurance of quality in the final product. That's why we rigorously check all inputs and procedures against your Quality Assurance Specs. Our focus on quality pays off in increased product value and gives you a critical edge in today's markets.



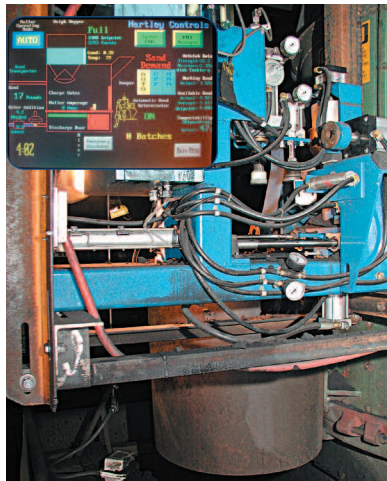
Ductile Iron (nodular)



Compacted Graphite Iron (vermicular)



Grey Iron (flake)



Sand Conditioning

Our sands go through a battery of tests for grain size, shear strength, tensile strength, hardness, moisture, moldability, and compactability, among others. Green molding sand is prepared from sands used in prior castings. The spent sand is run through a GK conditioner to cool it, size it, and remove materials created by the prior process. These sands are then mixed with various ingredients to revitalize the material. Materials and mixing are controlled with a Hartley Compactability Computer and Control. Core sand is prepared from two different base sands. The sand is mixed with chemicals suited to the particular casting in production.

Metal Control

Jencast metals are produced from recycled scrap, virgin pig iron, or metals with specified alloys. All additives are weighed and introduced either at the furnace, treating stage, or pouring ladles. The chemical results are monitored by computer on the melt and pouring ladle and confirmed on the laboratory Spectrometer. During the pouring process, test bars are produced for physical- and micro-analysis. By imprinting heat numbers on all castings we have a tracking system that provides quality assurance in every casting that we deliver.

Product Control

After the castings are produced, they are correlated by hardness and heat number to all physical and chemical tests. If required, the casting is heat treated to meet specifications. After passing rigorous materials tests, the product is fixtured, as required, to verify concentricity and geometric position of critical dimensions. We check internal integrity with ultrasound and x-ray. Each casting we produce for you will meet the standards you set.



Reduce Your Costs

To give you an edge in today's marketplace, we do more than provide you with quality castings at competitive prices. We ensure your castings are available in the right quantities at the right time.

Get JIT Delivery

Today's managers can draw on a variety of manufacturing systems designed to set up optimum inventory controls based on production, sales forecasts, and other factors. We offer scheduling assistance to compliment ERP, MRP, MPS, KANBAN, and other models to give you JIT delivery.

Pay Only for Castings You Need When You Need Them

Our Sold Product Inventory (SPI) is an option that allows you to minimize the money you tie up in inventory yet take advantage of volume pricing. You'll also benefit from guaranteed on-time delivery. You simply estimate how many castings you'll need annually. We produce the run but ship and bill you only for those you want when you request them. The rest stay in our inventory. When more are needed, we ship them from our warehouse and bill you accordingly until the obligation is fulfilled.

Our Customers...Our Partners

Jencast is a division of Jensen International, a diversified company providing casting, machining, metal fabrication, assembly, and manufactured products. The Jensen family established our foundry in 1919 and continues to operate it on the premise that our customers become our partners. As your manufacturing partner, through faith and trust, Jencast will commit its expertise and resources to building a mutually profitable relationship. Whatever your specific requirements may be, Jencast can configure a program of services to meet them.



Discover What the JENCAST Partnership Can Do for Your Products and Your Company

Call 1-800-331-3551 for more information and ordering.



P.O. Box 1509
Coffeyville, KS 67337
www.jencast.com