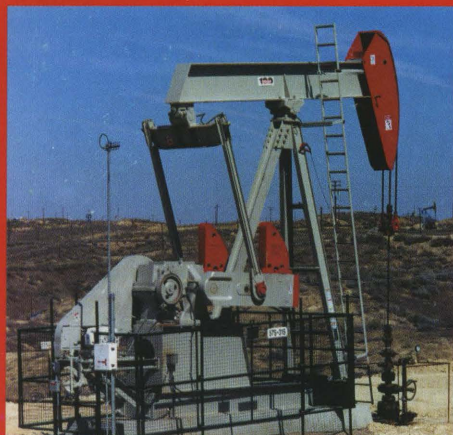
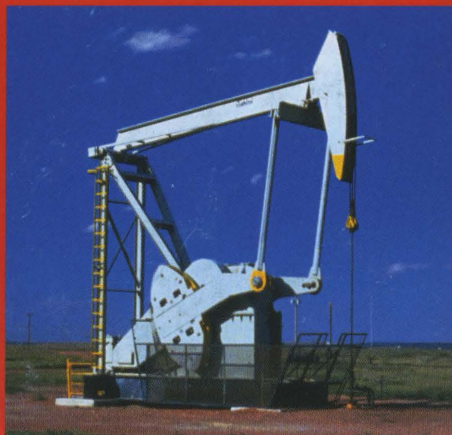


LUFKIN

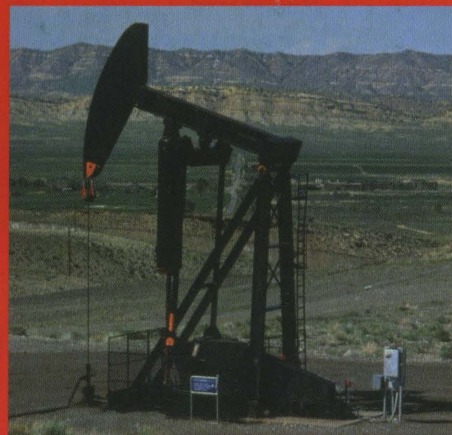
OILFIELD PRODUCTS GROUP PUMPING UNITS



CONVENTIONAL



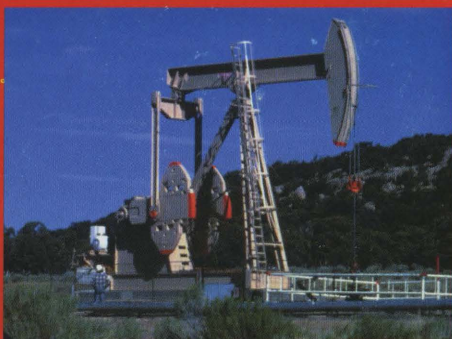
MARK II UNITORQUE



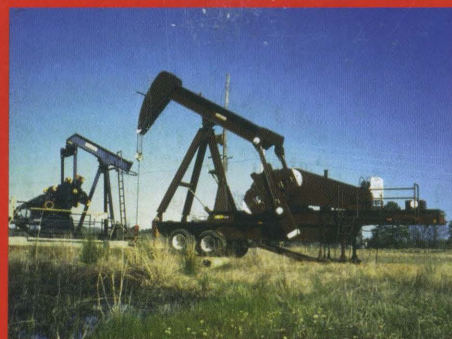
AIR BALANCED



LOW PROFILE



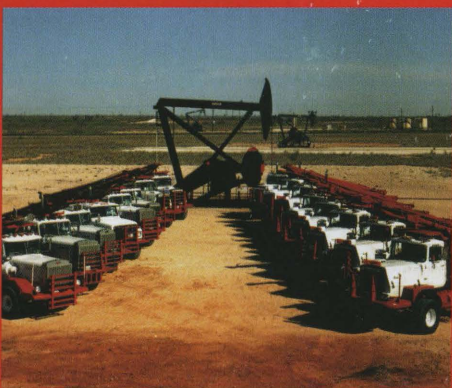
REVERSE MARK



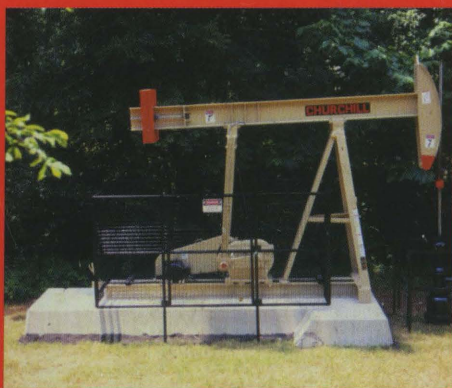
PORTABLE ROADRUNNER



SPECIAL APPLICATION

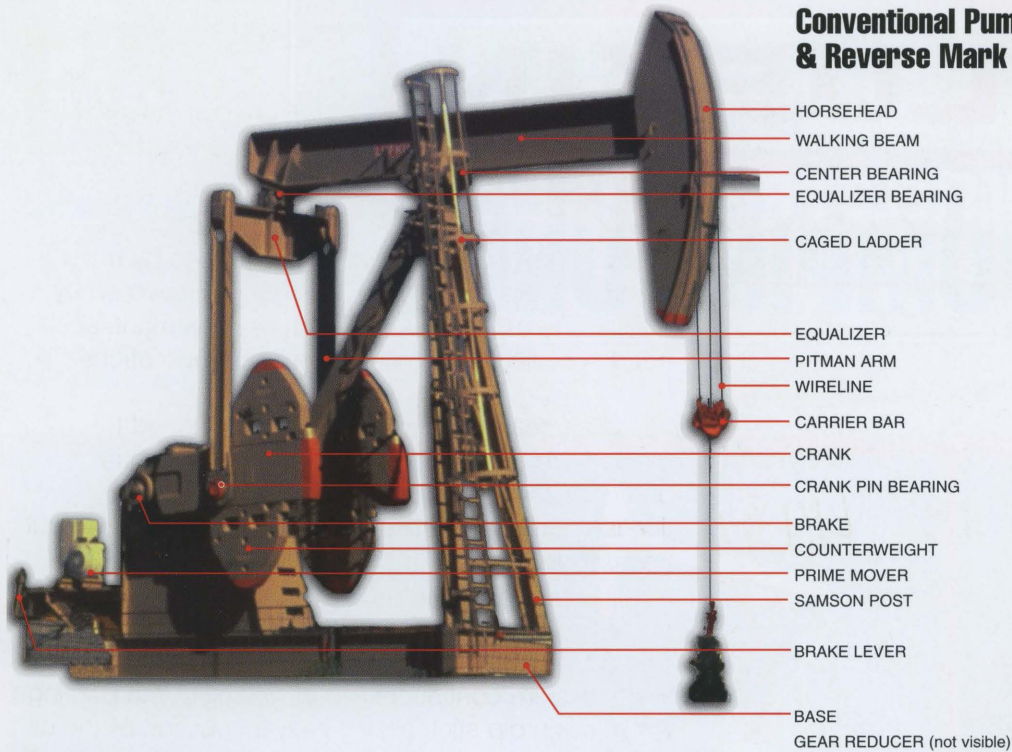


SERVICE CENTERS

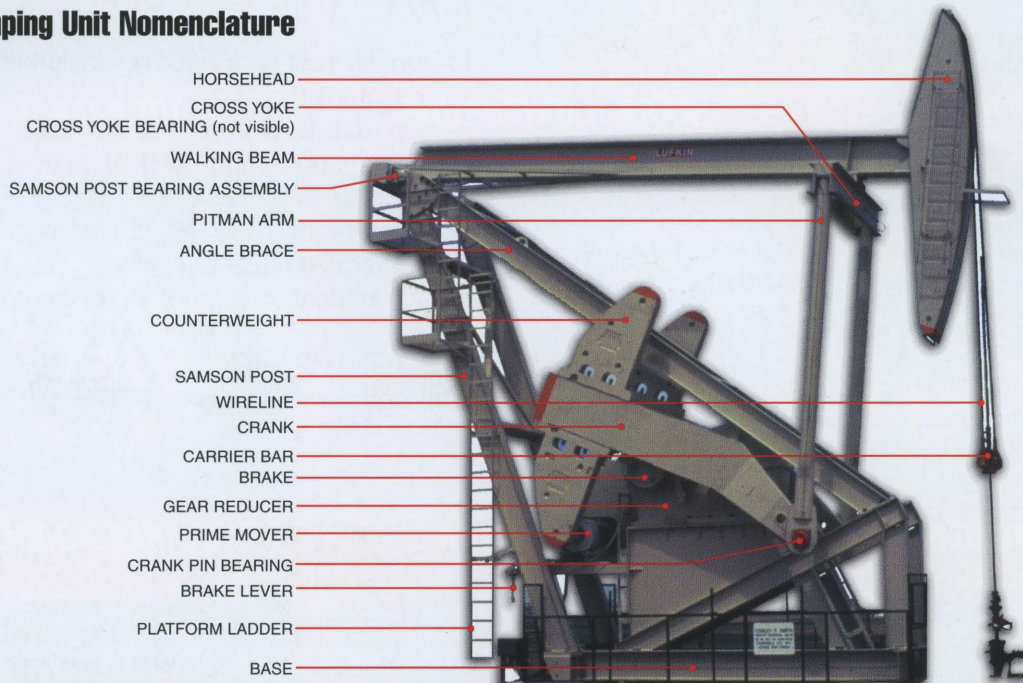


CHURCHILL® BEAM BALANCED

www.lufkin.com



Mark II Pumping Unit Nomenclature



Pumping Unit Model Number Designations

C-228D-246-86

*Type of Pumping Unit _____

Gear Reducer Peak Torque Rating (thousands of inch lbs.) _____

Double Reduction Gear Reducer _____

Polished Rod/Structure Load Rating (hundred lbs.) _____

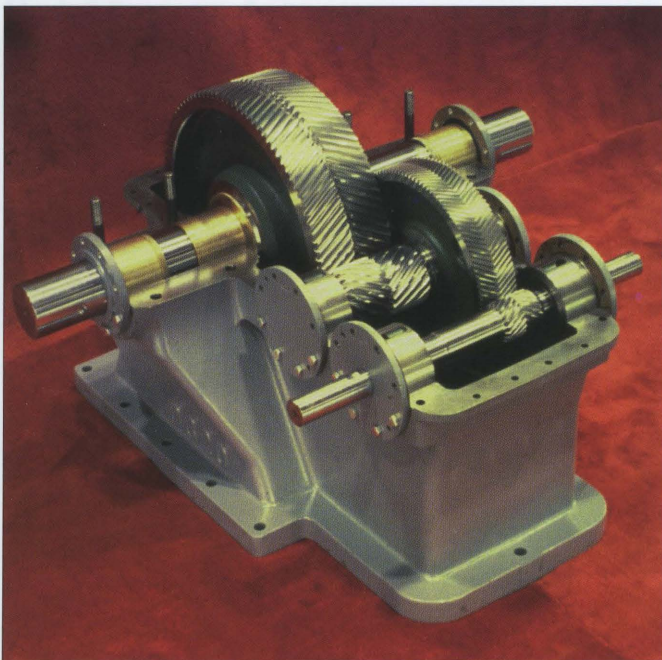
Maximum Stroke Length (inches) _____

*Key for Type of Pumping Unit	
A = Air Balanced	M = Mark II Unitorque
B = Beam Balanced	LP = Low Profile
C = Conventional	RM = Reverse Mark
CM = Conventional (roadrunner)	LC = Power Lift

WARNING: Using repair or replacement parts on any Lufkin Pumping Unit that do not meet Lufkin specifications could result in equipment damage and/or serious injury to personnel near the unit. Before performing maintenance or inspection on any pumping unit, be certain the prime mover is turned-off, locked and tagged in the "off" position; and be certain the cranks are secured against rotation. Any movement of the equipment during maintenance or inspection procedures can cause serious personal injury.

P.O. Box 849 (Hwy 69S & FM 326)
 Lufkin, Texas 75902-0849
 Phone: 936/637-5437
 Fax: 936/633-3563
 www.lufkin.com

LUFKIN GEAR REDUCERS



Lufkin Double Reduction Gear Reducers

Lufkin designed and manufactured herringbone gears (double helical) have proven to be the standard of excellence for pumping unit gear reducers. Herringbone gears are less sensitive to misalignment and resist torque reversals better than other types of gears. Heavy-duty sleeve bushings on the crankshaft and straight roller bearings on the high speed and intermediate shafts need no adjustment at assembly

or when field service is required. The nodular iron gears with high strength alloy pinion used by most manufacturers of pumping units were pioneered by Lufkin. The rugged two-piece housing is manufactured specifically for oilfield pumping applications.

All Lufkin gear reducers have been designed to exceed API and AGMA specifications. Lufkin is authorized to display the API monogram and is licensed under specification 11E. Lufkin precision-cut, herringbone gears are encased in a strong, heavy-walled, cast-iron gear reducer housing. Operating in an oil bath ensures positive lubrication of the heat-treated, nodular gears and steel alloy pinions. An oil wiper system continuously supplies oil to the bearings. An oil gage dip stick allows easy inspection of the oil level in the gear reducer housing. Special features of these rugged oilfield reducers include:

- Horizontally split gear housing designed for easy field maintenance
- Precision-cut Lufkin herringbone gears
- All shafts made from alloy steel, heat treated and precision turned to tight tolerances
- Oversized bronze bushings on crankshafts which seldom require replacement
- Positive lubrication system (no oil pumps required)



Lufkin Gear Reducer Data

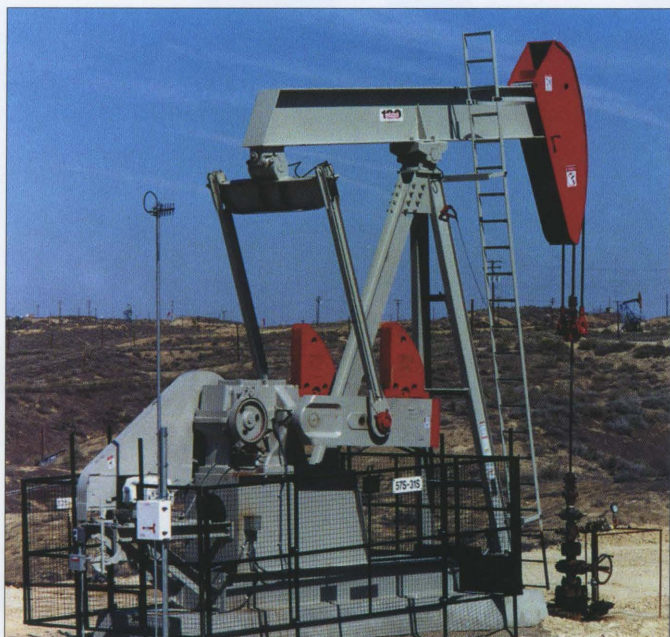
Gear Reducer Size	Peak Torque Rating (in. lbs.)	Gear Ratio	Crankshaft Diameter Conventional/Mark II (inches)	Sheave Pitch Diameter (inches)	Sheave Belt Section	Sheave Bore Dia. (inches)	Gear Reducer Oil Capacity (gallons)	Gear Design	Crankshaft Bearings	Intermediate & High Speed Bearings
2560D	2,560,000	34.53:1	11.75	55, 68	12D	6.50	235	Herringbone	Sleeve Bushings	Straight Roller
1824D	1,824,000	28.33:1	9/10.5	55, 68	10D	4.94	165	Herringbone	Sleeve Bushings	Straight Roller
1280D	1,280,000	28.05:1	8.5/10.5	36, 68 / 35, 68	10C/8D	4.94	120	Herringbone	Sleeve Bushings	Straight Roller
912D	912,000	28.72:1	7/9*	33, 40, 48, 55.2 / 50, 55.2	6D/8C	4.19	107	Herringbone	Sleeve Bushings	Straight Roller
640D	640,000	28.60:1	7/9	22, 27, 33, 48, 55.4 / 24, 36, 44, 50, 55.6	5D/6C	3.44	70	Herringbone	Sleeve Bushings	Straight Roller
456D	456,000	29.04:1	7/9	22, 27, 33, 48 / 24, 36, 44, 50	4D/6C	3.44	55	Herringbone	Sleeve Bushings	Straight Roller
320D	320,000	30.12:1	6.44/8.5	24, 30, 36, 44, 47	5C	2.94	50	Herringbone	Sleeve Bushings	Straight Roller
228D	228,000	28.45:1	6/7	24, 30, 36, 41	4C	2.44	34	Herringbone	Sleeve Bushings	Straight Roller
160D	160,000	28.67:1	5.44/7	20, 24, 30, 36, 38	3C	2.19	22	Herringbone	Sleeve Bushings	Straight Roller
114D	114,000	29.40:1	4.44/6.44	20, 24, 30, 33.6	2C	1.94	17	Herringbone	Sleeve Bushings	Straight Roller
80D	80,000	29.40:1	4.44	20, 24, 30, 33.6	2C	1.94	17	Herringbone	Sleeve Bushings	Straight Roller
57D	57,000	29.32:1	4	20, 24, 27 / 20, 25, 27.6	2C/3B	1.94	13	Herringbone	Sleeve Bushings	Straight Roller
40D	40,000	29.20:1	4	20, 24 / 20, 23.3	2C/3B	1.69	7	Herringbone	Sleeve Bushings	Straight Roller
25D	25,000	28.90:1	3	18.4	2B	1.38	5	Herringbone	Sleeve Bushings	Straight Roller
16D	16,000	35.7:1	2.5	15.0 / 15.4	3A or 2B	1.19	5	Herringbone	Sleeve Bushings	Straight Roller

* 10.5 for 912DS Mark II



CONVENTIONAL CRANK BALANCED PUMPING UNITS

P.O. Box 849 (Hwy 69S & FM 326)
Lufkin, Texas 75902-0849
Phone: 936/637-5437
Fax: 936/633-3563
www.lufkin.com



The World's Most Popular Rod Pump

The Lufkin Conventional Crank Balanced Pumping Unit, widely known and accepted, is the old reliable "work horse" of the oil patch. This is the most universally adaptable unit in the Lufkin line. These units are simple to operate and require minimum maintenance. They are available in sizes up to the C-1824D-305-240; a unit with a 240-inch stroke, a polished rod capacity of 30,500 pounds and a 1,824,000 inch-pound double reduction gear box.

Conventional Crank units are manufactured in either two-point foundation or standard-base foundation designs. Two-point units are suitable for front and rear, precast, concrete-block foundations or fabricated-foundation pads under the front and rear of the unit. Precast concrete blocks reduce concrete requirements by approximately 80%. This simple suspension/foundation design significantly reduces installation time. Standard-base units must have a one-piece block foundation supporting the entire steel base.

Standard Unit Sizes

C-1824D-305-240	C-640D-305-144	C-320D-256-100	C-160D-173-64
C-1824D-365-216	C-640D-256-144	C-320D-246-86	C-160D-143-64
C-1824D-365-192	C-640D-365-120	C-320D-213-86	C-114D-119-86
C-1280D-305-240	C-640D-305-120	C-320D-246-74	C-114D-143-74
C-1280D-427-192	C-456D-305-168	C-228D-213-120	C-114D-173-64
C-1280D-365-192	C-456D-305-144	C-228D-213-100	C-114D-143-64
C-912D-305-240	C-456D-265-144	C-228D-173-100	C-114D-173-54
C-912D-365-192	C-456D-365-120	C-228D-246-86	C-114D-133-54
C-912D-305-192	C-456D-305-120	C-228D-213-86	C-80D-119-64
C-912D-365-168	C-456D-256-120	C-228D-200-74	C-80D-135-54
C-912D-305-168	C-456D-213-120	C-228D-173-74	C-80D-119-54
C-912D-427-144	C-456D-256-100	C-160D-173-100	C-80D-133-48
C-912D-365-144	C-320D-256-144	C-160D-173-86	C-80D-109-48
C-640D-365-168	C-320D-256-120	C-160D-200-74	
C-640D-305-168	C-320D-213-120	C-160D-173-74	
C-640D-365-144	C-320D-305-100	C-160D-143-100	

P.O. Box 849 (Hwy 69S & FM 326)
 Lufkin, Texas 75902-0849
 Phone: 936/637-5437
 Fax: 936/633-3563
 www.lufkin.com

MARK II UNITORQUE PUMPING UNITS



Mark II Geometry Reduces Rod Load and Peak Torque

Lufkin Mark II Unitorque Pumping Units are available in fifty different sizes up to the M-1824D-427-216; a unit with a 216-inch stroke, a polished rod capacity of 42,700 pounds and a 1,824,000 inch-pound double reduction gear box.

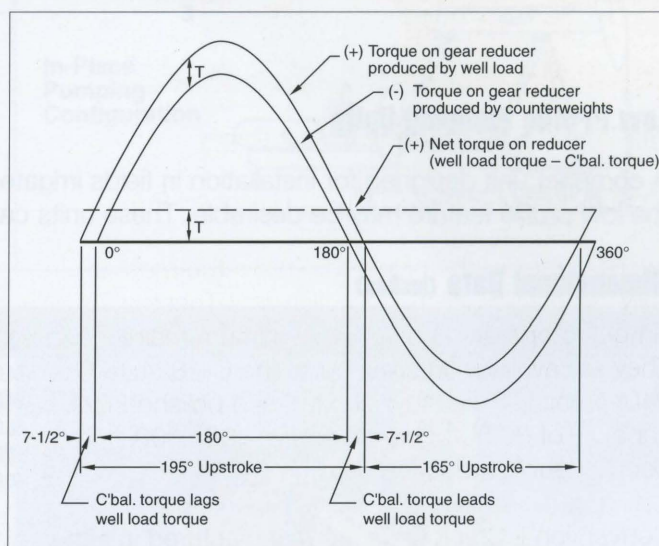
The Mark II's unique UNITORQUE geometry is characterized by three (3) basic configurations which reduce the rod load and peak torque over that of a conventional pumping unit. The design characteristics which make the Mark II unique are:

- Shifting the gearbox from directly under the equalizer towards the Samson post turning in a preferred direction of rotation, creates an upstroke that occurs in approximately 195° of crank rotation and a downstroke of approximately 165° of crank rotation.
- Placing the equalizer between the horsehead and the Samson post creates a "push-up" or "Class 3" lever system.

The 195° upstroke, coupled with the front mounted geometry, reduces the acceleration at the beginning of the upstroke where the load is greatest, thereby effecting a reduction in polished rod load. Locating the cross-yoke forward of the gear reducer creates a greater mechanical advantage for lifting the heavy load on the upstroke, and a lesser mechanical advantage for the reduced downstroke load (i.e., the maximum upstroke torque factor is reduced while the maximum downstroke torque factor is increased).

- An angular offset in the crank that produces a more effective counterbalance torque which at the beginning of the upstroke "lags" the well load torque approximately 7½°. Similarly, at the beginning of the downstroke, this same offset condition produces a counter balance torque which "leads" the well load torque approximately 7½°.

Independently these features would not produce a relatively uniform torque, but working together a "unitorque" system is obtained which can reduce the torque on the gearbox up to 35% as well as lowering power costs and often, prime mover size.



Uniform torque can be obtained under ideal conditions.

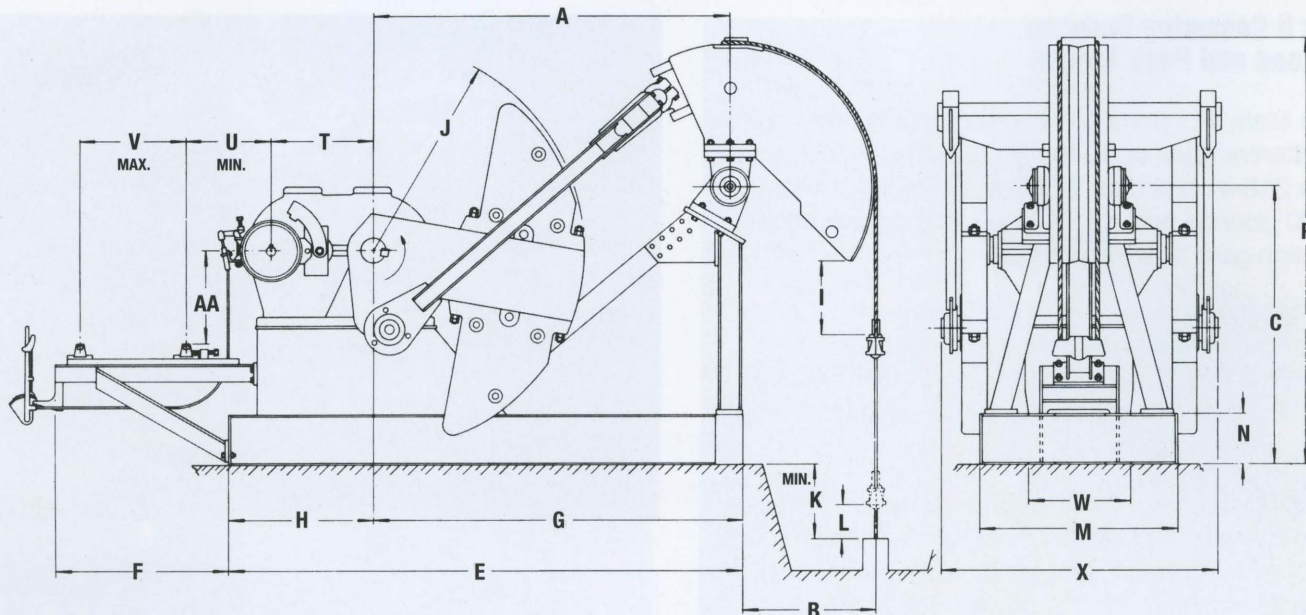
NOTE: The Mark II Unit must be operated in a counter-clockwise direction (standing at the side of the unit with the wellhead to the right).

Standard Unit Sizes			
M-1824D-427-216	M-640D-365-168	M-456D-256-120	M-228D-200-74
M-1280D-427-216	M-640D-305-168	M-320D-256-144	M-228D-173-74
M-1280D-427-192	M-640D-365-144	M-320D-305-120	M-160D-213-86
M-912DS-365-216	M-640D-305-144	M-320D-256-120	M-160D-173-86
M-912DS-427-192	M-640D-256-144	M-320D-213-120	M-160D-200-74
M-912DS-427-168	M-640D-305-120	M-320D-305-100	M-160D-173-74
M-912D-305-216	M-456D-305-192	M-320D-256-100	M-114D-143-86
M-912D-305-192	M-456D-305-168	M-228D-256-120	M-114D-173-74
M-912D-365-168	M-456D-365-144	M-228D-213-120	M-114D-143-74
M-912D-305-168	M-456D-305-144	M-228D-256-100	M-114D-173-64
M-912D-365-144	M-456D-256-144	M-228D-173-100	M-114D-143-64
M-912D-305-144	M-456D-365-120	M-228D-246-86	
M-640D-305-192	M-456D-305-120	M-228D-213-86	



LOW PROFILE AND POWER LIFT PUMPING UNITS

P.O. Box 849 (Hwy 69S & FM 326)
Lufkin, Texas 75902-0849
Phone: 936/637-5437
Fax: 936/633-3563
www.lufkin.com



Low Profile Pumping Units

A compact unit designed for installation in fields irrigated by traveling sprinkler systems or in urban areas where the low profile feature may be desirable. These units can be shipped from the factory completely assembled.

Dimensional Data (inches)

Standard Unit Sizes	A	B	C	E	F	G	H	I	J	K	L	M	N	P	T	U	V	W	X	AA
LP-320D-246-86	109.00	55.50	88.00	157.50	52.75	105.50	52.00	9.75	64.00	24.00	7.50	51.75	16.38	141.50	34.00	31.38	31.25	43.00	86.00	40.88
LP-228D-246-86	109.00	55.50	88.00	150.69	52.75	105.56	45.13	9.75	64.00	24.00	7.50	51.75	16.38	141.50	30.00	28.38	31.25	37.00	79.00	38.63
LP-228D-173-64	94.00	41.50	72.00	142.50	52.75	97.50	45.00	12.00	56.00	19.00	6.38	51.75	16.38	119.00	30.00	29.50	30.00	37.00	78.50	24.13
LP-160D-173-64	94.00	41.50	72.00	138.00	40.38	97.50	40.50	12.00	56.00	19.00	6.38	51.75	16.38	119.00	26.00	17.13	30.25	32.00	70.13	28.56
LP-114D-133-54	84.00	31.13	66.00	122.25	40.38	87.25	35.00	17.00	50.00	19.00	6.44	48.25	12.25	102.00	24.00	13.63	29.25	25.00	66.75	22.56

NOTE: Do not use above dimensions for foundation. Request foundation plan.

Power Lift Folding Beam Pumping Unit

The low clearance Power Lift Unit is an API size 640D-305-144 pumping unit that can hydraulically fold to a height of 15 ft. Lowering the unit approximately 3 ft. below the ground surface will allow a 12 ft. center pivot irrigation system to travel over the unit.



The Power Lift Unit design is conventional except for the addition of a "knee joint" in the rear Samson post leg which allows the post to fold, thus, lowering the beam and horsehead.

It can be shipped partially assembled to minimize equipment and personnel during installation.

Dimensional Data (inches)

Standard Unit Size	Height	Folded Height	Base Length (w/Hi-Prime)	Set Back	Overall Length	Min. Carrier Bar Ground Clearance
LC-640D-305-144	351	179	353	47.63	401	42

P.O. Box 849 (Hwy 69S & FM 326)
 Lufkin, Texas 75902-0849
 Phone: 936/637-5437
 Fax: 936/633-3563
 www.lufkin.com

REVERSE MARK AND PORTABLE ROADRUNNER PUMPING UNITS



Reverse Mark Pumping Units

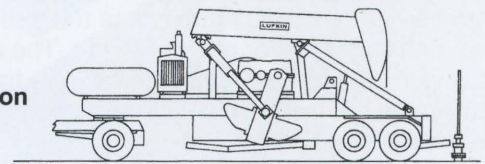
The Lufkin Reverse Mark or 'RM' Series Pumping Unit offers the customer an improved alternative to the conventional type geometry. Although similar in appearance to the Lufkin Conventional Pumping Unit, the RM unit geometry can reduce the torque and power requirements on many pumping applications. In some instances a smaller reducer and prime mover can be used.



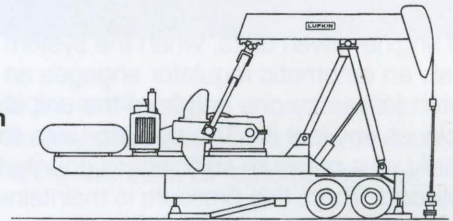
Portable Roadrunner Pumping Units

The Lufkin "Roadrunner" is a trailer-mounted, self-contained conventional pumping unit that lowers for legal highway transport. It can be erected and fully functional in a few minutes at the well site. These units are available for sale, rental or lease. Typical applications include: removing frac fluids, stripper well pumping, gas well dewatering, temporary production pumping, well testing, and an alternative to swabbing units.

Portable Traveling Configuration



In-Place Pumping Configuration



Standard Unit Sizes

RM-1824D-427-192	RM-912D-365-168	RM-640D-305-120	RM-320D-213-120
RM-1824D-365-192	RM-912D-305-168	RM-640D-256-120	RM-320D-305-100
RM-1824D-427-168	RM-912D-427-144	RM-456D-305-168	RM-320D-256-100
RM-1824D-365-168	RM-912D-365-144	RM-456D-365-144	RM-320D-246-86
RM-1280D-427-192	RM-912D-305-144	RM-456D-305-144	RM-228D-213-120
RM-1280D-365-192	RM-640D-305-192	RM-456D-256-144	RM-228D-256-100
RM-1280D-427-168	RM-640D-365-168	RM-456D-365-120	RM-228D-213-100
RM-1280D-365-168	RM-640D-305-168	RM-456D-305-120	RM-228D-173-100
RM-912D-427-192	RM-640D-427-144	RM-456D-256-120	RM-228D-246-86
RM-912D-365-192	RM-640D-365-144	RM-320D-256-144	RM-228D-213-86
RM-912D-305-192	RM-640D-305-144	RM-320D-305-120	RM-228D-200-74
RM-912D-427-168	RM-640D-256-144	RM-320D-256-120	RM-228D-173-74



Standard Unit Sizes

CM-456D-305-120
 CM-320D-305-100
 CM-228D-246-86
 CM-160D-74



AIR BALANCED PUMPING UNITS

P.O. Box 849 (Hwy 69S & FM 326)
Lufkin, Texas 75902-0849
Phone: 936/637-5437
Fax: 936/633-3563
www.lufkin.com

Air Balanced Pumping Units provide:

- Perfect counterbalance with finger-tip control.
- Lower installation cost.
- Compact and portable; ideal for well testing.
- Small size and lighter weight make unit ideal for export.
- Stroke lengths to 20 feet for high volume production from great depths.

These are some of the outstanding advantages of Lufkin Air Balanced Pumping Units. These units employ compressed air to counterbalance the well load rather than beam weights or crank weights. The air system has been so simplified that the only continuously operating parts are the balance cylinder and piston. The reservoir capacity of the cylinder is enlarged by a steel receiver which moves with the cylinder as a unit.

On engine-driven units, when the system is in need of air, an automatic regulator engages an air operated clutch (driven by one belt from the unit sheave) and replaces any lost air. The operator sets the regulator, initially, at a pressure sufficient to counterbalance the well load. Then, this pressure is maintained automatically. Should the load change appreciably, a slight adjustment of the regulator will restore perfect counterbalance.

A safety shut-off switch is available, which will ground out the engine, or shut off the motor, if pressure should exceed a preset figure or fall below a minimum pre-set figure.

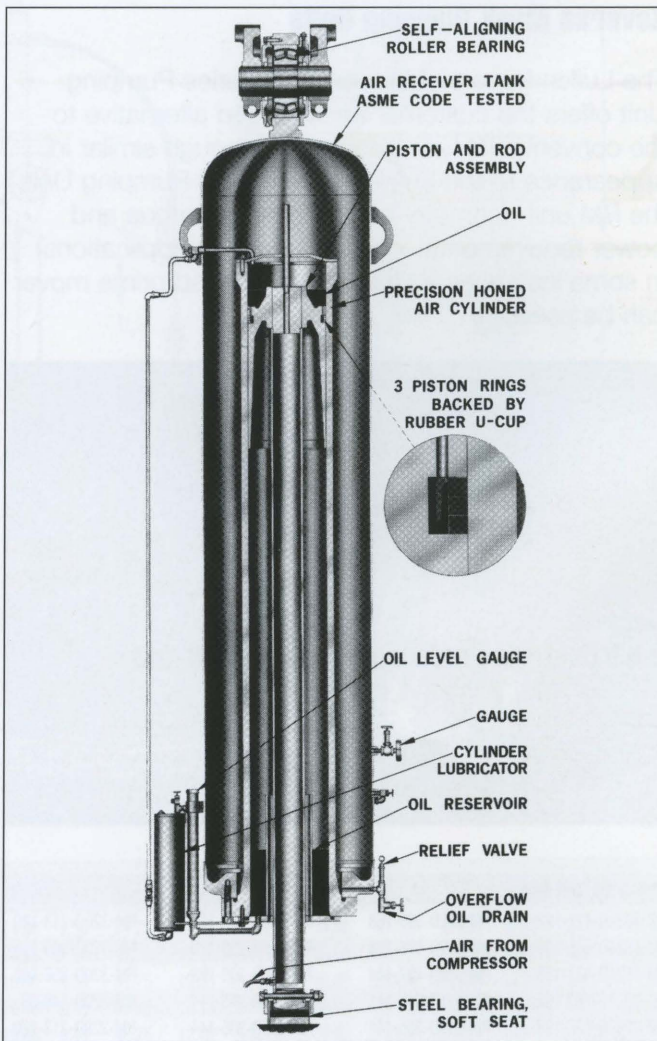
For units pumping with electricity, a separate motor-driven compressor assembly is standard equipment.

Lufkin Air Balanced Units are approximately 35% shorter and 40% lighter than crank-type units, which makes them ideal for use as portable or test units, and for installation on piling or superstructures. Since changing counterbalance effect is a matter of adjusting a valve, air balanced units are ideal for use in testing wells.

All of the ruggedness and simplicity of conventional Lufkin Pumping Units are incorporated in the design of Lufkin's Air Balanced Pumping Units.

Standard Unit Sizes

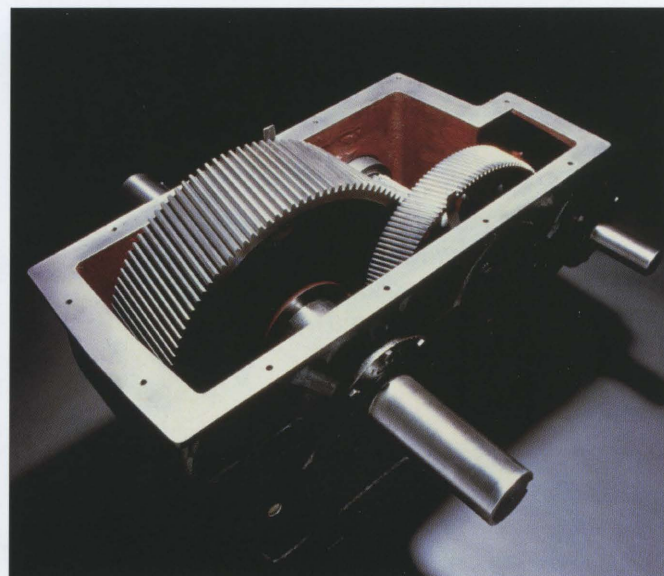
A-2560D-470-240	A-1280D-305-168	A-640D-427-144	A-320D-305-100
A-1824D-470-240	A-912D-470-240	A-640D-305-144	A-228D-173-100
A-1824D-427-216	A-912D-427-216	A-640D-365-120	A-228D-246-86
A-1824D-427-192	A-912D-427-192	A-456D-305-144	A-160D-200-74
A-1280D-470-240	A-912D-305-168	A-456D-365-120	A-114D-173-64
A-1280D-427-216	A-912D-427-144	A-456D-256-120	
A-1280D-427-192	A-640D-305-168	A-320D-256-120	



A Lufkin Air Balanced Unit with electric motor drive.

P.O. Box 849 (Hwy 69S & FM 326)
 Lufkin, Texas 75902-0849
 Phone: 936/637-5437
 Fax: 936/633-3563
 www.lufkin.com

CHURCHILL® BEAM BALANCED PUMPING UNITS



The Industry's Preferred Shallow-Well Unit

Churchill Beam Balanced Pumping Units, available exclusively from Lufkin Industries, have been field proven since 1954. They offer the same rugged dependability as our conventional units. On shallow wells around the world, they have long been the producer's unit of choice.

Churchill's precision-cut helical gears are encased in a strong, heavy-walled, cast-iron gear reducer housing. For smaller, beam balanced pumping units, these gear reducers are the most economical and reliable available.

Lufkin's Churchill brand gear reducers are also designed to exceed API and AGMA specifications. All tapered roller bearing cups are mounted in bearing

carriers. This unique configuration minimizes field replacement time and prevents damage to the housing should a bearing fail. Special features include:


- Unique StepDown™ housing design, which minimizes shaft deflection and improves proper gear meshing
- Positive lubrication by integral wiper system
- Built-in oil level sight gauge
- Precision-cut Lufkin helical gears
- All shafts made from high grade steel, heat treated and precision turned to tight tolerances

Standard Unit Sizes

B-80-76-64	B-57-109-42	B-40-76-42	B-16-53-30
B-80-76-54	B-50-89-54	B-40-89-36	B-16-40-24
B-80-109-48	B-50-89-48	B-25-67-36	B-13-32-24
B-80-109-42	B-50-89-42	B-25-56-36	B-10-32-18
B-57-76-54	B-40-76-48	B-25-67-30	B-6.4-32-16
B-57-109-48	B-40-89-42	B-25-53-30	B-6.4-28-12

Churchill Gear Reducer Data

Gear Reducer Size	Peak Torque Rating (in. lbs.)	Gear Ratio	Sheave Pitch Dia. (inches)	Sheave Belt Section	Gear Reducer Oil Capacity (gallons)	Gear Design	Crankshaft Bearings	Intermediate & High Speed Bearings
B-80	80,000	30.06:1	24	4-B, 3-C	13	Helical	Tapered Roller	Tapered Roller
B-57	57,000	31.57:1	24	4-B, 3-C	13	Helical	Tapered Roller	Tapered Roller
B-50	50,000	31.11:1	18.4	3-B	4	Helical	Tapered Roller	Tapered Roller
B-40	40,000	31.11:1	18.4	3-B	4	Helical	Tapered Roller	Tapered Roller
B-25	25,000	31.14:1	18.4	2-B	2	Helical	Tapered Roller	Tapered Roller
B-16	16,000	31.36:1	18.4	2-B	1.5	Helical	Tapered Roller	Tapered Roller
B-13	13,000	31.36:1	18.4	1-B	1.5	Helical	Tapered Roller	Tapered Roller
B-10	10,000	33.24:1	18.4	1-B	1.25	Helical	Tapered Roller	Tapered Roller
B-6.4	6,400	33.64:1	18.4	1-B	1	Helical	Tapered Roller	Tapered Roller

 <p>LUFKIN OILFIELD PRODUCTS GROUP</p>	<p>OILFIELD SERVICE CENTERS</p>	<p>P.O. Box 849 (Hwy 69S & FM 326) Lufkin, Texas 75902-0849 Phone: 936/637-5437 Fax: 936/633-3563 www.lufkin.com</p>
--	--	--

Lufkin's Oilfield Service Group refurbishes and sells used pumping units, and provides installation, repair and field maintenance services from a network of pumping unit service facilities in the following locations:

- Bakersfield, California
- Glendive, Montana
- Farmington, New Mexico
- Lovington, New Mexico
- Oklahoma City, Oklahoma
- Andrews, Texas
- Denver City, Texas
- Kilgore, Texas
- Levelland, Texas
- Odessa, Texas
- Snyder, Texas
- Talco, Texas
- Salawa, Kuwait
- Cairo, Egypt

Experienced manufacturing and field service personnel provide a wide-variety of pumping unit services for oil producers around the world including:

- OEM replacement parts for Lufkin, Churchill and American pumping units
- Replacement parts for all brands of pumping units
- Repair or rebuilding of damaged pumping units
- Transportation of pumping units to and from field locations
- Inspection and preventive maintenance services
- Manufacturing/supply of portable concrete bases

OEM Parts. Lufkin Industries is well stocked with a complete inventory of Lufkin, Churchill and American OEM parts. All parts have been manufactured to the OEM design requirements under the API-Q-1 quality program for which few, if any, local machine shops qualify.

Repair Facilities. Lufkin's Oilfield Service Group works on all brands of units. Operating from well-equipped service vehicles, experienced personnel make many repairs in the field. Additionally, Lufkin maintains state-of-the-art repair facilities in strategic oilfield centers throughout the oilfield.

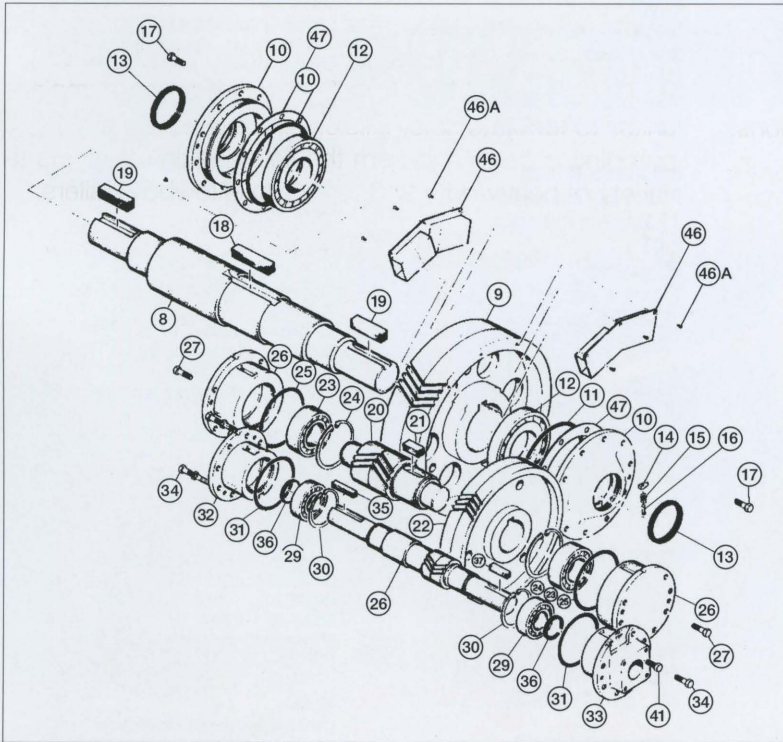
Service Equipment. Lufkin operates a modern fleet of specially equipped tandem winch trucks and cranes designed to provide safe, effective service on pumping units. To facilitate safe, efficient transportation of pumping units to and from the field, Lufkin maintains a variety of heavy-duty 2, 3, and 4 axle lowboy trailers.

Service and Parts Guarantee. Lufkin guarantees its products to be free from defects, to fit correctly and to give unmatched performance and reliability when properly installed. Our guarantee exceeds the oilfield industry's standard equipment guarantees.



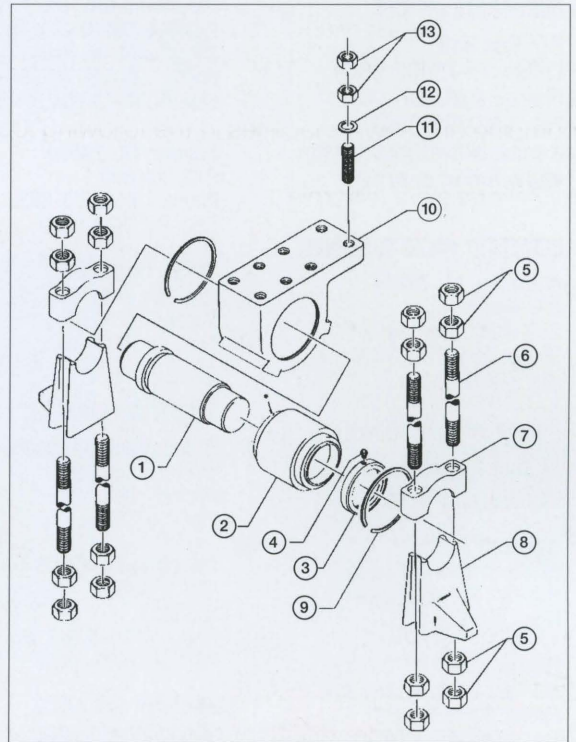
P.O. Box 849 (Hwy 69S & FM 326)
 Lufkin, Texas 75902-0849
 Phone: 936/637-5437
 Fax: 936/633-3563
 www.lufkin.com

OEM REPLACEMENT PARTS FOR AMERICAN PUMPING UNITS



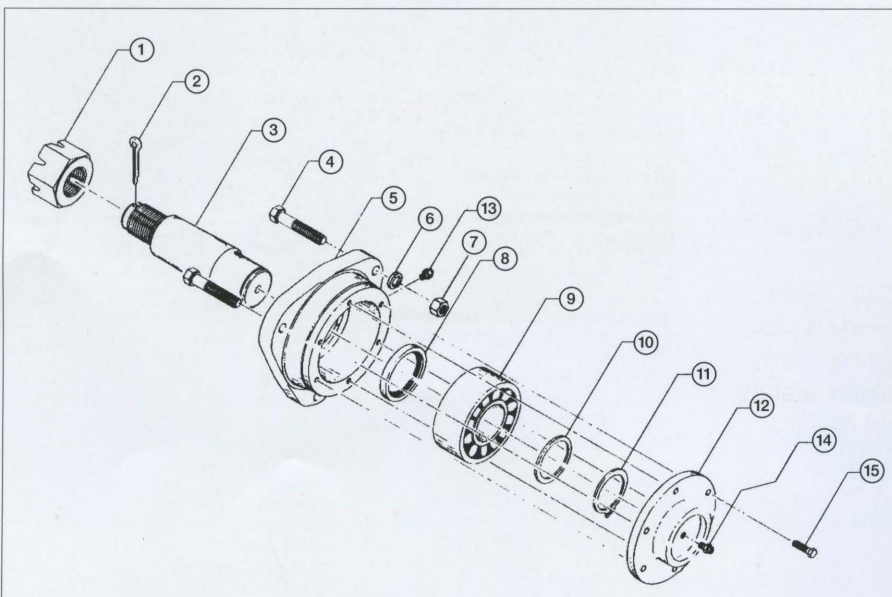
Gear Reducer

- | | | | |
|-------------------|------------------|------------------------|-------------------|
| 8 L.S. SHAFT | 16 L.S. GEAR KEY | 26 I.S. BRG. HSG | 34 BOLT |
| 9 L.S. GEAR | 19 CRANK KEY | 27 BOLT | 35 SHEAVE KEY |
| 10 L.S. BRG. HSG. | 20 I.S. PINION | 28 H.S. PINION | 36 DUST SEAL |
| 11 RING L.S. | 21 H.S. GEAR KEY | 29 H.S. BEARING | 37 BRAKE DRUM KEY |
| 12 L.S. BEARING | 22 H.S. GEAR | 30 H.S. SNAP RING | 41 BOLT |
| 13 DUST SEAL | 23 I.S. BEARING | 31 O-RING, H.S. | 46 OIL SCOOP |
| 14 WIPER | 24 SNAP RING | 32 HS. BRG. HSG. L.H. | 46A SCREW |
| 15 SPRING | 25 RING I.S. | 33 H.S. BRG. HSG. R.H. | 47 SHIM |



Equalizer Assembly

- | | |
|--------------------|--------------------------|
| 1 EQUALIZER PIN | 9 RETAINING RINGS |
| 2 BEARING ASSEMBLY | 10 EQUALIZER BRG HOUSING |
| 3 RETAINING RING | 11 STUD |
| 4 GREASE FITTING | 12 HARDENED WASHER |
| 5 HEX. NUT | 13 HEX NUT |
| 6 STUD BOLT | |
| 7 CENTER CLAMP CAP | |
| 8 CENTER CLAMP | |



Wrist Pin Assembly

- | |
|------------------------|
| 1 WRIST PIN NUT |
| 2 COTTER PIN |
| 3 WRIST PIN |
| 4 BOLT |
| 5 BEARING HOUSING |
| 6 LOCK WASHER |
| 7 HEX. NUT |
| 8 OIL SEAL |
| 9 WRIST PIN BEARING |
| 10 SUPPOST WASHER |
| 11 RETAINING RING |
| 12 BEARING HOUSING CAP |
| 13 RELIEF FITTING |
| 14 GREASE FITTING |
| 15 BOLT |



SALES AND SERVICE LOCATIONS

CORPORATE OFFICES

P.O. Box 849
Lufkin, TX 75902-0849
Phone: 936/637-5437
Fax: 936/633-3563
e-mail: oilfield@lufkin.com
www.lufkin.com

DOMESTIC SALES & SERVICE

Andrews, TX 79714
P. O. Box 12
2340 North US Hwy 385
Phone: 915/523-3836
Fax: 915/523-3972

Bakersfield, CA 93308
2500 Parker Lane
Phone: 661/327-3563
Fax: 661/327-0690

Casper, WY 82601
610 N. Warehouse Road
Phone: 307/234-5346
Fax: 307/472-0723

Denver City, TX 79323
P.O. Box 1350, N. Hwy 214
Phone: 806/592-3531
Fax: 806/592-3425

Farmington, NM 87401
P.O. Box 183, 4000 Monroe
Phone: 505/566-9285
Fax: 505/566-9286

Glendive, MT 59330
P.O. Box 1345, 184 Hwy 200 S.
Phone: 406/377-7880
Fax: 406/377-7980

Houston, TX 77024
9821 Katy Frwy, Ste. 900
Phone: 713/468-7804
Fax: 713/468-6880

Kilgore, TX 75662
P. O. Box 3095
1-20 & Hwy 42
Phone: 903/984-3875
Fax: 903/984-2449

Levelland, TX 79336
P. O. Box 1594
2512 West Hwy 114
Phone: 806/894-2889
Fax: 806/894-2364

Lovington, NM 88260
P. O. Box 40, Artesia Hwy
Phone: 505/396-2620
Fax: 505/396-5298

Odessa, TX 79765
P. O. Box 1632 (79760)
13400 W. Business 20 E.
Phone: 915/563-0363
Fax: 915/561-8203

Oklahoma City, OK 73129*

P. O. Box 95205 (73143)
2300 South Prospect
Phone: 405/677-0567
Fax: 405/677-7045

Snyder, TX 79550
P. O. Box 600
Phone: 915/573-2633
Fax: 915/573-6330

Talco, TX 75487
P. O. Box 245, Hwy 71 E.
Phone: 903/379-2101
Fax: 903/379-9842

LUFKIN AUTOMATION

Bakersfield, CA 93308
2500 Parker Lane
Phone: 661/322-6944
Fax: 661/327-0690

Houston, TX 77031 (Plant)
11375 W. Sam Houston Pkwy. S.
Ste. 800
Phone: 281/495-1100
Fax: 281/495-6333

Midland, TX 79703
2064 Market Street
Phone: 915/697-2228
Fax: 915/697-0192

INTERNATIONAL LOCATIONS

Argentina (Sales)
LUFKIN Argentina S.A. (LASA)
Reconquista 656 6th Floor A.
(1003) Buenos Aires, Argentina
Phone: 54-11-4315-1641
Fax: 54-11-4311-8181

Argentina (Plant)
Parque Ind. Comodoro Rivadavia
Maclzo 3, Casilla de Correo 104
(9000) Comodoro Rivadavia Chubut,
Argentina
Phone: 54-11-967-481-30750
Fax: 54-11-967-482-32735

Canada (Sales)*
Lufkin Industries Canada Ltd.
#1050, 808-4th Avenue S.W.
Calgary, Alberta T2P 3E8
Phone: 403/234-7692
Fax: 403/265-6913

Canada (Plant)
1107-8th A Street
Nisku Industrial Park
Nisku, Alberta T9E 7R3
Phone: 403/955-7566
Fax: 403/955-3359

Egypt

Lufkin Egypt
Rd. 281 #5
New Maadi, Cairo, Egypt
Phone: 20-2-754-8828
Fax: 20-2-519-3734

Indonesia (Plant)
PT LUFKIN Indonesia
J.I. Brigjerd Katamsio
KM6
Tanjung Uncang
Batam, Indonesia
Phone: 62-778-393-283
Fax: 62-778-393-280

Russia

Ul. Mikluho-Maklaya,
House 38, Apt. 112
Moscow, Russia 117279
Phone: 70-95-429-1228
Fax: 70-95-429-1228

Venezuela (Sales)
LUKIVEN, S.A.
Circunvlacion #2, #111A-250
Frente Al Hotel Maruma
Maracaibo, Venezuela
Phone: 58-61-360289
Fax: 58-61-360087

Venezuela (Plant)
LUFKIN de Venezuela, S.A. (LUFSA)
Carretera a Perija Km. 15
Apartado 10392
Maracaibo, Venezuela
Phone: 58-61-360784
Fax: 58-61-592241

REPRESENTATIVES/DISTRIBUTORS

Africa (North & Central) and France
D.I.M.A.P.E.
21, rue de la Belle Feuille
92100 Boulogne, Billancourt, France
Phone: 33-14-605-8200
Fax: 33-14-603-4799
Z.I. Iduspal B.P.118
64143 Lons Cedex, Pau, France
Phone: 33-55-962-0162
Fax: 33-55-962-0730

Australia and New Zealand
Bayliss Energy Services
163 Park Road, Yeerongpilly,
Queensland, 4105, Australia
Phone: 61-73892-5270
Fax: 61-73892-2240

Austria, Hungary and Czechoslovakia
Premaberg Industrieanlagen Gesellschaft
M.B.H.
A-2362 Biedermansdorf
Josef Madeersperger Str. 3, Austria
Phone: 43-2236-76265-33
Fax: 43-2236-76265-6

Brazil

Cotema Equipamentos Eqecas Ltda.
Rua Carlos Vicari, 317 - Ague Branca
05033-070 Sao Paulo/SP Brasil
Phone: 55-11-3872-3922
Fax: 55-11-3862-0697

Colombia

Lukiven - Colombia Ltd.
Avenida 15, No. 129-52, Casa 1
Bogota, Colombia, S.A.
Phone: 57-1-626-2549
Fax: 57-1-259-4866

Ecuador

DC TECHNICAL REPRESENTATIONS
Republica de el Salvador 309 Of 5C
Quito, Ecuador
Phone: 5932-458-374
Fax: 5932-443-311

Guatemala

COAMPASA
15 Calle, 6-38 Zona 10 Of. 3
Guatemala, Guatemala 01010
Phone: 502-337-0971
Fax: 502-337-0041=**Indonesia**
PT. IMECO
Jl. Ampera Raya no. 9-10
Jakarta - 12550 - Indonesia
Phone: 62-21-780-8068
Fax: 62-21-780-8055

Kuwait

Safwan Trading & Contracting
3rd Industrial Estate
Parcel 101, Block "D" Street 87
Shuwaikh, Kuwait
Phone: 965-481-1606
Fax: 965-484-2454

Mexico

Cables Y Accesorios Del Sureste,
S.A.De C.V.(CABSA)
Francisco Marquez No. 143
Col. Condesa, 06140, Mexico
Phone: 525-211-2666
Fax: 525-211-6097

Oman

Oman Oilfields Supply Centre L.L.C.
P. O. Box 1160, Ruwi, Postal Code 112
Sultanate of Oman
Phone: 968-602-044
Fax: 968-699-730

Trinidad

Industrial Agencies Limited
18 Lady Hailes Ave.
San Fernando, Trinidad W.I.
Phone: 868-657-8561
Fax: 868-652-0884

Terran Persad Industrial Estate
La Romain, Trinidad, W.I.
Phone: 868-653-4264
Fax: 868-653-4320

Turkey

Agrimex, Inc.
10600 Fallstone Road
Houston, TX 77099 U.S.A.
Phone: 281/530-9858
Fax: 281/530-9613

Sub-Agent: Insmak
1570 Sokak No. 17/301
35110 Cinarli
Izmir, Turkey
Phone: 90-232-486-2813
Fax: 90-232-461-0130

Venezuela

Lukiven, S.A.
Carretera Negra KM 1000
Anaco, Venezuela
Phone: 58-82-23989
Fax: 58-82-23062

* Also includes Lufkin Automation