



# Model E20RC Engine



This single-cylinder, four-cycle, heavy-duty, medium speed power unit runs on natural gas or gasoline.

It has condenser cooling (radiator and fan), valve-in-head design, aluminum alloy pistons, flyball governor, dynamically balanced crankshaft, precision-type connecting rod bearings and wet-type cylinder liner. If desired a 12-volt electric starting system can be furnished. Low tension ignition system is standard.

## Features

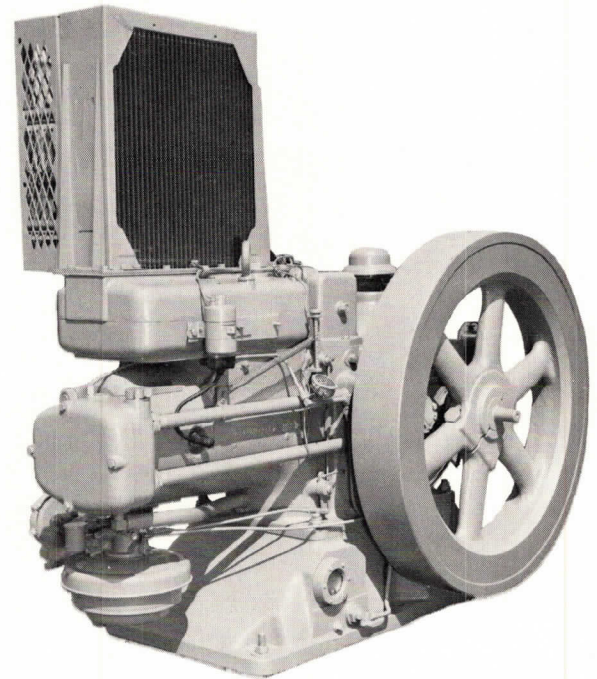
Crankshaft is of heat-treated, forged alloy steel and is counterbalanced and mounted in tapered roller bearings.

Cylinder Liner is precision honed, centrifugally cast, close-grain iron.

Cylinder Head has large inlet and exhaust ports and is fitted with replaceable valve guides and valve seat inserts.

Valve rotators are used on the stellite faced valves with stellite valve seats. Tappets and push rods are completely enclosed.

Ample Lubrication to all working parts of the E20 is assured by a combination splash and pres-



sure system. Connecting rod bearing is lubricated by filtered oil, pressure-fed through the crankpin.

Condenser Type Cooling provides uniform operating temperatures and assures good thermal efficiency.

Connecting Rod is a steel forging with a precision type, steel-backed, aluminum lined crankpin bearing. This bearing does not require adjustment regardless of operating conditions of the engine.

## Specifications

Bore	..... inches	6¼
Stroke	..... inches	8
Displacement	..... cu. in.	245
Speed Range	..... rpm	450/750
Natural Gas Rating: (continuous, for oil well pumping service)		
450 rpm	..... hp	12.4
550 rpm	..... hp	15.4
650 rpm	..... hp	18
750 rpm	..... hp	20
Rated Brake Mean Effective Pressure (Natural Gas)	..... psi	87
Exhaust Connection (Pipe Size)	..... inches	2
Gas Intake Connection (Pipe Size)	..... inch	¾
Oil Capacity	..... qts.	12
Water Capacity (Condenser Cooling)	..... qts.	13
Shipping Weight—Standard Equipment		
Only	..... pounds	2,230

We reserve the right to change specifications without incurring any obligation for equipment previously or subsequently sold.

