

# Model F42A-RC Engine



This gas-gasoline four-cycle engine is designed for continuous operation. It is completely weather-proof and can be operated the year around without protective covering.

It has condenser cooling (radiator and fan), valve-in-head design, aluminum alloy piston, flyball governor, forged steel crankshaft and wet-type cylinder liner. Electric, 12-volt starting equipment, or air starting and C-D type ignition can be furnished when specified. Low tension ignition system is standard.

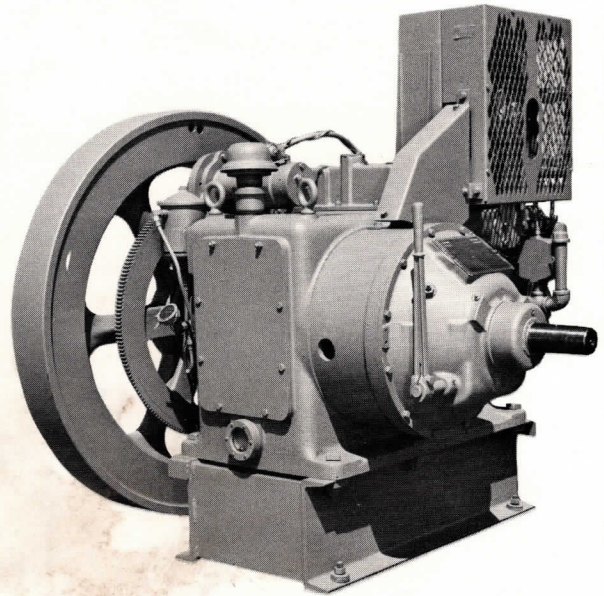
## Features

Forged Steel Crankshaft with removable counterweights is mounted in two large, tapered-roller main bearings.

Aluminum Alloy Piston is equipped with three compression and two oil rings for reduced liner wear and full power.

Wet-Type Cylinder Liner is replaceable in the field.

Cylinder Head has large unrestricted intake and exhaust passages and is fitted with replaceable valve-seat inserts and valve guides. Its water jacket provides ample cooling.



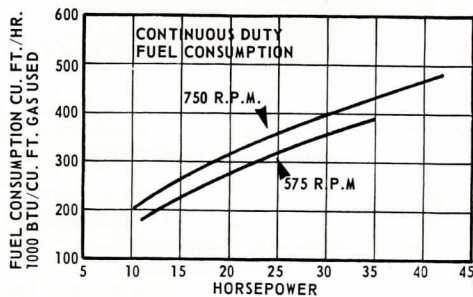
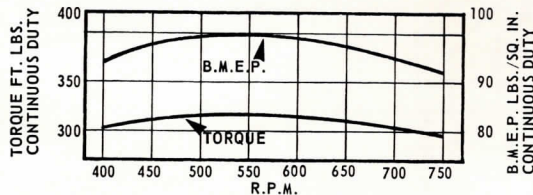
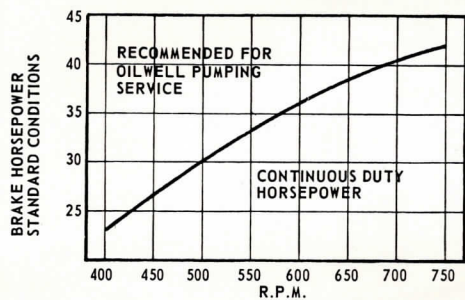
Valve Rotators assure the long valve life of the stellite faced exhaust valves and stellite valve seats as well as the heat resistant alloy steel intake valves and seats.

Ample Lubrication is assured by a combination pressure-feed and splash system. A full-flow filter that adequately filters the oil at all times is standard equipment.

Condenser-Type Cooling provides uniform operating temperatures and assures good thermal efficiency.

## Specifications

Bore .....	8 3/4
Stroke .....	8
Displacement .....	481
Speed Range .....	400/750
Natural Gas Rating at:	
400 rpm .....	23.0
450 rpm .....	26.8
550 rpm .....	33.2
600 rpm .....	36.2
650 rpm .....	38.5
750 rpm .....	42.0
Rated Brake Mean Effective Pressure	
(Natural Gas) .....	92.0
Exhaust Connection (Pipe Size) .....	3
Gas Intake Connection (Pipe Size) .....	1
Oil Capacity .....	16
Water Capacity (Condenser Cooling) .....	7
Shipping Weight—Standard Equipment	
Only .....	2,800



We reserve the right to change specifications without incurring any obligation for equipment previously or subsequently sold.