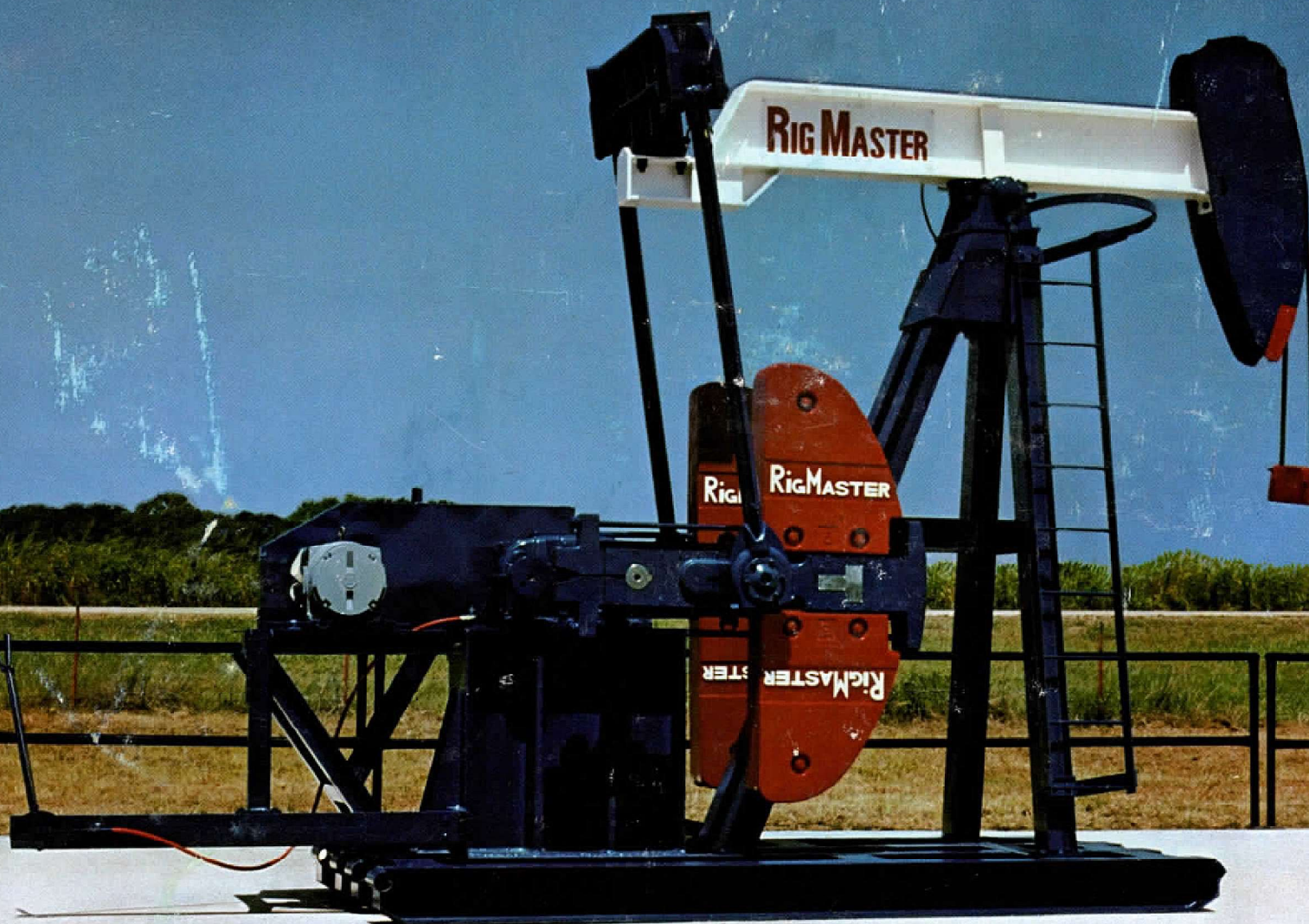
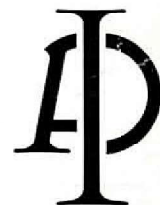


# RIGMASTER 80 PUMPING UNITS



RigMaster, Inc.

HOUSTON OFFICES P.O. Box 19801 Houston, Texas 77024 Phone 713-467-4660  
PLANT 807 Bohlmann Avenue Schulenburg, Texas 78956 Phone 713-743-4107



# RIGMASTER SERIES 80 SIZE 114 PUMPING UNITS

114,000 INCH POUND PEAK TORQUE REDUCERS

## STRUCTURE DATA

Structure Size	173-64	143-64	173-54
Unit Designation	114-173-64	114-143-64	114-173-54
Structure Capacity, Lbs.	17,300	14,300	17,300
Length of Stroke, In.	64,54,44	64,54,44	54,44,34
Walking Beam Size	21 x 83#	18 x 71#	18 x 71#
Saddle Bearing Pt. No.	RM 80142	RM 80142	RM 80142
Tailbearing Pt. No.	RM 80148	RM 80148	RM 80148
Wrist Pin Bearing Pt. No.	RM 80139	RM 80139	RM 80139
Pitman Size	3" Sch. 40 Pipe	3" Sch. 40 Pipe	3" Sch. 40 Pipe
Wire Line Hanger	1" x 8" Ctrs.	1" x 8" Ctrs.	1" x 8" Ctrs.
Cranks	RM 14101	RM 14101	RM 14101
Net Structure Unbalance	+ 795	+ 785	+ 1010

## GEAR REDUCER DATA

Reducer Size	114
Peak Torque @ 20 S.P.M.	114,000 In./Lbs.
Gear Ratio, Triple Reduction	54.17:1
Crankshaft Diameter	5.0"; Key - 1 1/4 x 1 1/4 x 7 1/2 Lg.
V-Belt Sheave Outside Diameter	Std. - 28" 3G5V
Alternates	21.20" 3G5V, 16.0" 3G5V
Diameter of Reducer High Speed Shaft	1 7/8"; Key - 1/2 x 1/2 x 3 1/2 Lg.
Gear Reducer Oil Capacity, U.S. Gal.	6 1/2

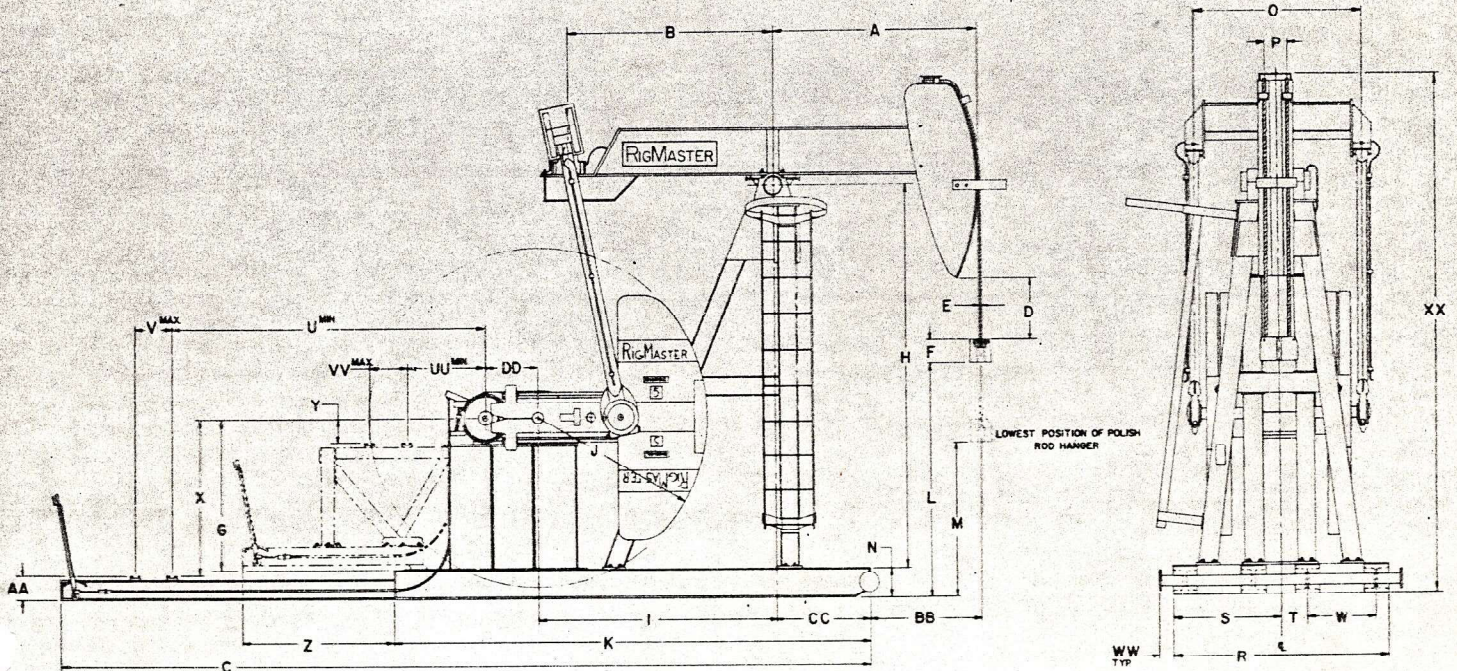
## OPTIONAL ITEMS

Wide Main Base (Portable Type).

Power Assemblies for: Single Cylinder Engines, Hi Speed Engines, Electric Motors, Elevated or Ground Level.

Crank Guard Rails

Two Tone Paint.



Model Number	A	B	C	D	E	F	G	H	I	J	K	L	M	N	O	P	R	S	T	U	V	W	X	Y	Z	AA	BB	CC	DD	UU	VV	WW	XX
114-173-64	6'-9 3/4"	5'-9"	19'-10"	19 1/2"	1"	7 3/8"	5 1/4"	10'-7 1/8"	6'-6 1/4"	56"	158"	6'-6"	46"	9 3/4"	55 1/2"	8"	76"	38"	9"	66"	30"	25"	52 1/2"	9"	62"	7 1/2"	50 1/2"	31 1/2"	19 3/4"	29"	46"	4"	14'-4 3/8"
114-143-64	6'-9 3/4"	5'-9"	19'-10"	19 1/2"	1"	7 3/8"	5 1/4"	10'-7 1/8"	6'-6 1/4"	56"	158"	6'-6"	46"	9 3/4"	55 1/2"	8"	76"	38"	9"	66"	30"	25"	52 1/2"	9"	62"	7 1/2"	50 1/2"	31 1/2"	19 3/4"	29"	46"	4"	14'-4 3/8"
114-173-54	5'-9"	5'-9"	19'-10"	19 1/2"	1"	7 3/8"	5 1/4"	10'-7 1/8"	6'-6 1/4"	56"	158"	6'-6"	51"	9 3/4"	55 1/2"	8"	76"	38"	9"	66"	30"	25"	52 1/2"	9"	62"	7 1/2"	37 1/2"	31 1/2"	19 3/4"	29"	46"	4"	14'-4 3/8"