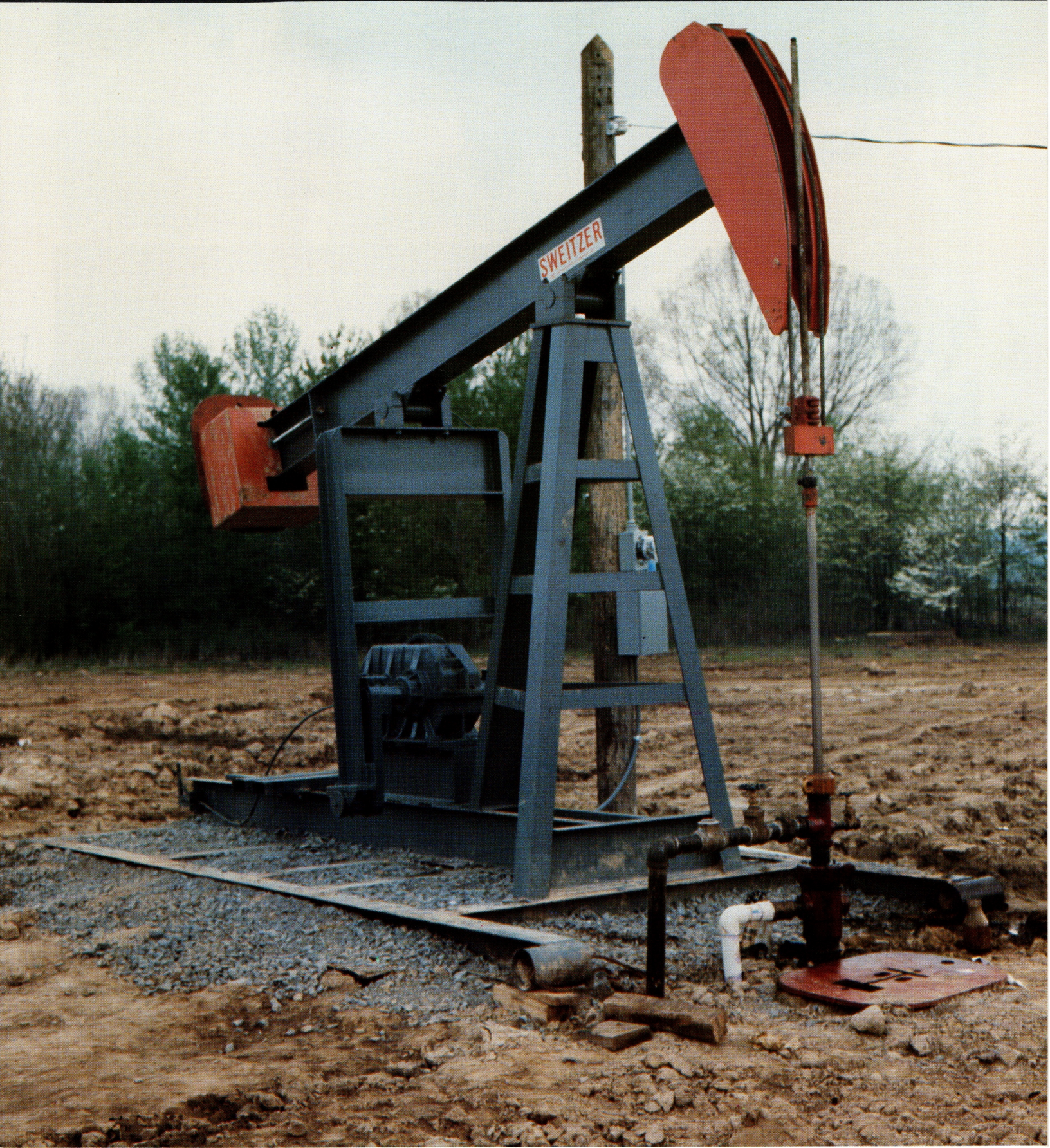


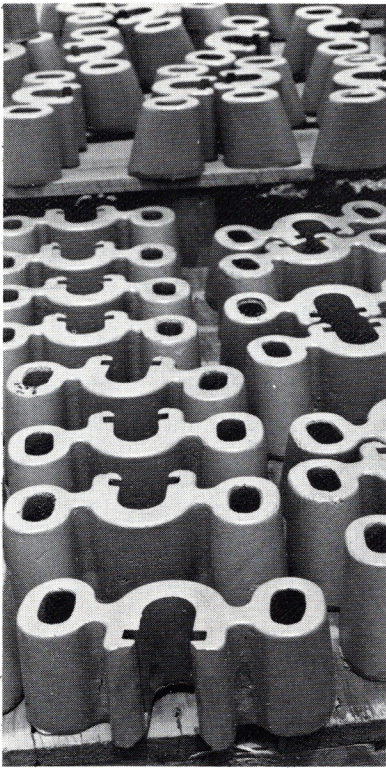
Sweitzer Pump Jacks
"We will give your oil a lift"



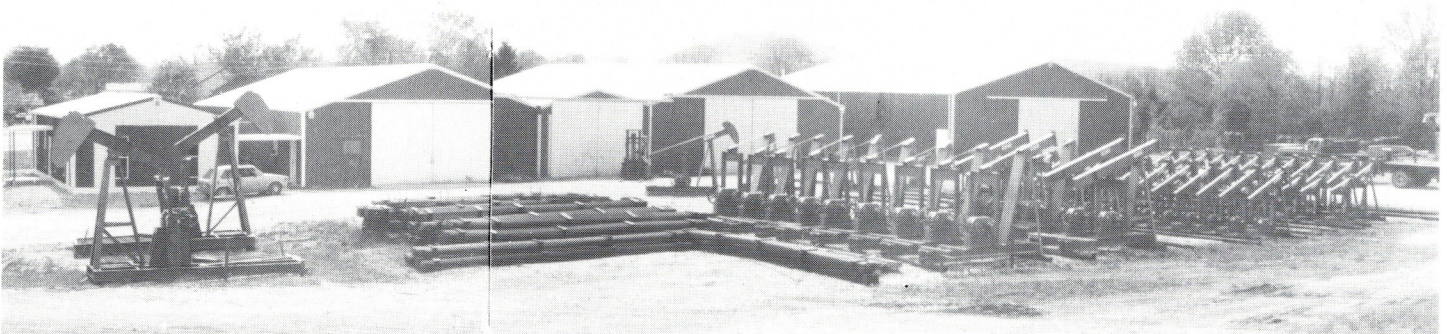
Sweitzer

Pumping Units



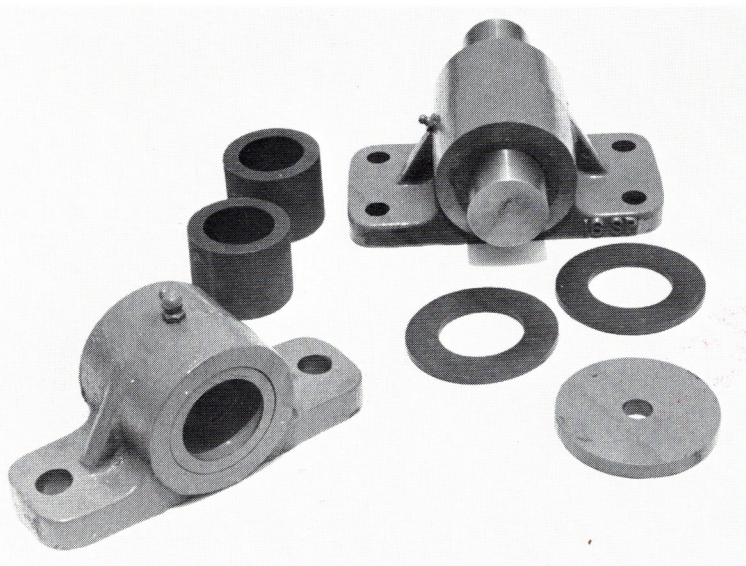


**Sweitzer Manufacturing,
The Largest Pump Jack Manufacturer In Cave City, Kentucky.**



Behind Sweitzer Pumping Units stands over 20 years drilling, producing, manufacturing and fabricating experience. And through Terrell gear drive division over 20 years gearing experience.

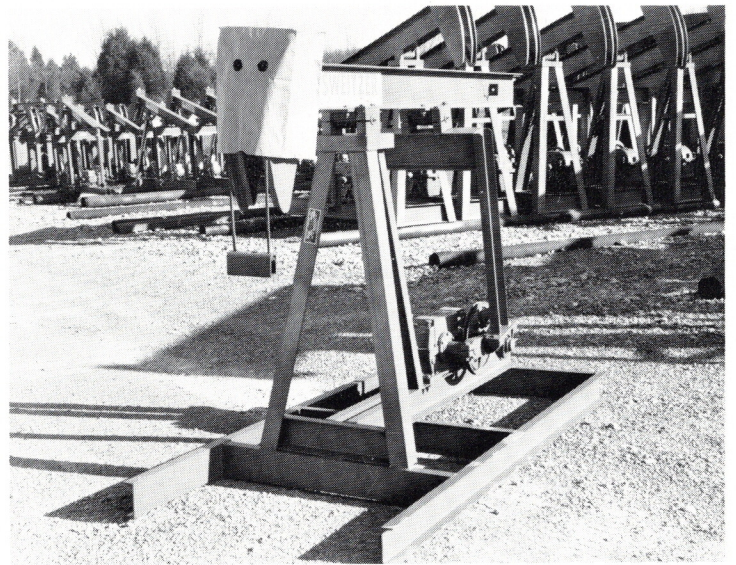
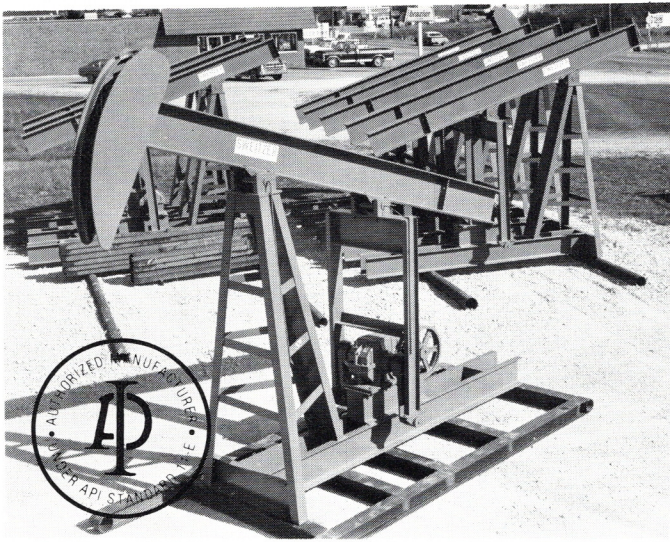
With any oil deal you investigate the pros and cons thoroughly. And if you did the same with pumping units you would buy a Sweitzer. Use your own judgment. It's your money you're saving.



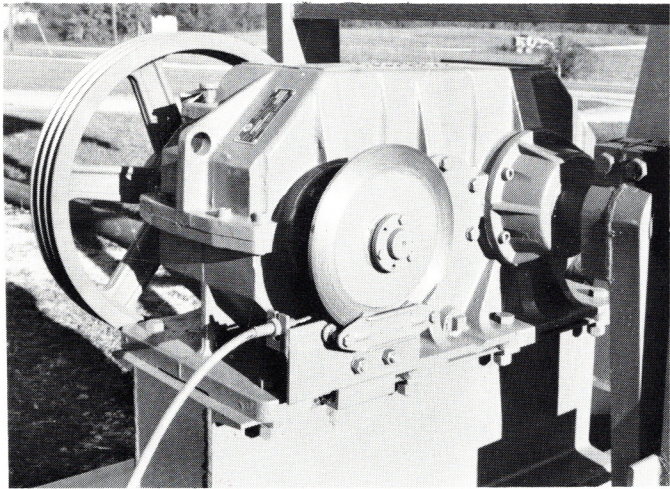
SWEITZER WEAR-EVER® BEARINGS



**FRONT COVER
MODEL NO. 40-89-42
MUHLENBERG COUNTY, KENTUCKY**



(THE UNKNOWN PUMP JACK)



SWEITZER PUMPING UNITS

Manufactured By

Sweitzer Manufacturing, Inc.

31-W North, Cave City, Ky. 42127

502-773-2179 or 773-2170



Call Toll Free 1-800-626-6185

In Kentucky 1-800-452-3063

Terrell has developed an extremely rugged family of gear drive products for use on pump jacks. These conservatively rated gear drives are designed with minimum maintenance and rugged dependability in mind. When maintenance is necessary, the machine's down time is minimized by Terrell design features such as split housings.

The major features of our pump jack drives are:

- Class 30 Gray Iron Castings.
- AISI 8620 Forgings or barstock for gears, carburized to Rockwell C-58 minimum.
- AISI 8620 Shaft Material, carburized to Rockwell C-58 minimum, or AISI C-1144 stress relieved.
- Buna N Dual Lip Seals.
- Tapered Roller Bearings.
- Helical Gears, crowned and shaved for quiet operation and high performance.
- AGMA class 7 precision gears.
- Individual computerized analysis of each design.

